

A Career in **HEALTHCARE**



Nassau-Suffolk
Hospital Council

2022 Guide



A Career in **HEALTH CARE**

Health care is an exciting and dynamic field. Often when deciding what career path to follow, people identify various goals they hope to achieve. They want good salaries, opportunities for advancement, and challenging and interesting work experiences. You can fulfill these goals with a career in health care, but you can add to those features an important ingredient: the good feeling you get from helping others.

Yes, careers in health care are careers that count! Be part of a team that brings hope and comfort to the sick and elderly. Teach the disabled to recapture their independence. Help identify and manage various medical conditions. Be part of the information technology (IT) and administrative infrastructure that makes up the backbone of health care institutions. These are just a few examples of how rewarding it is to be part of the health care team. Allied health includes fields such as nursing, physical therapy, occupational therapy, pharmacy, medical laboratory technology, respiratory therapy, nutrition, radiologic technology, and more. These careers pay well, are in demand throughout the country, and offer flexible hours in stimulating environments.

Demand for health professionals is expected to grow more than twice as fast as the rest of the labor force in the coming decades. So when you are considering where your future will take you, consider health care. Become one of the team that makes a difference in people's lives—it'll make a difference in your life too!

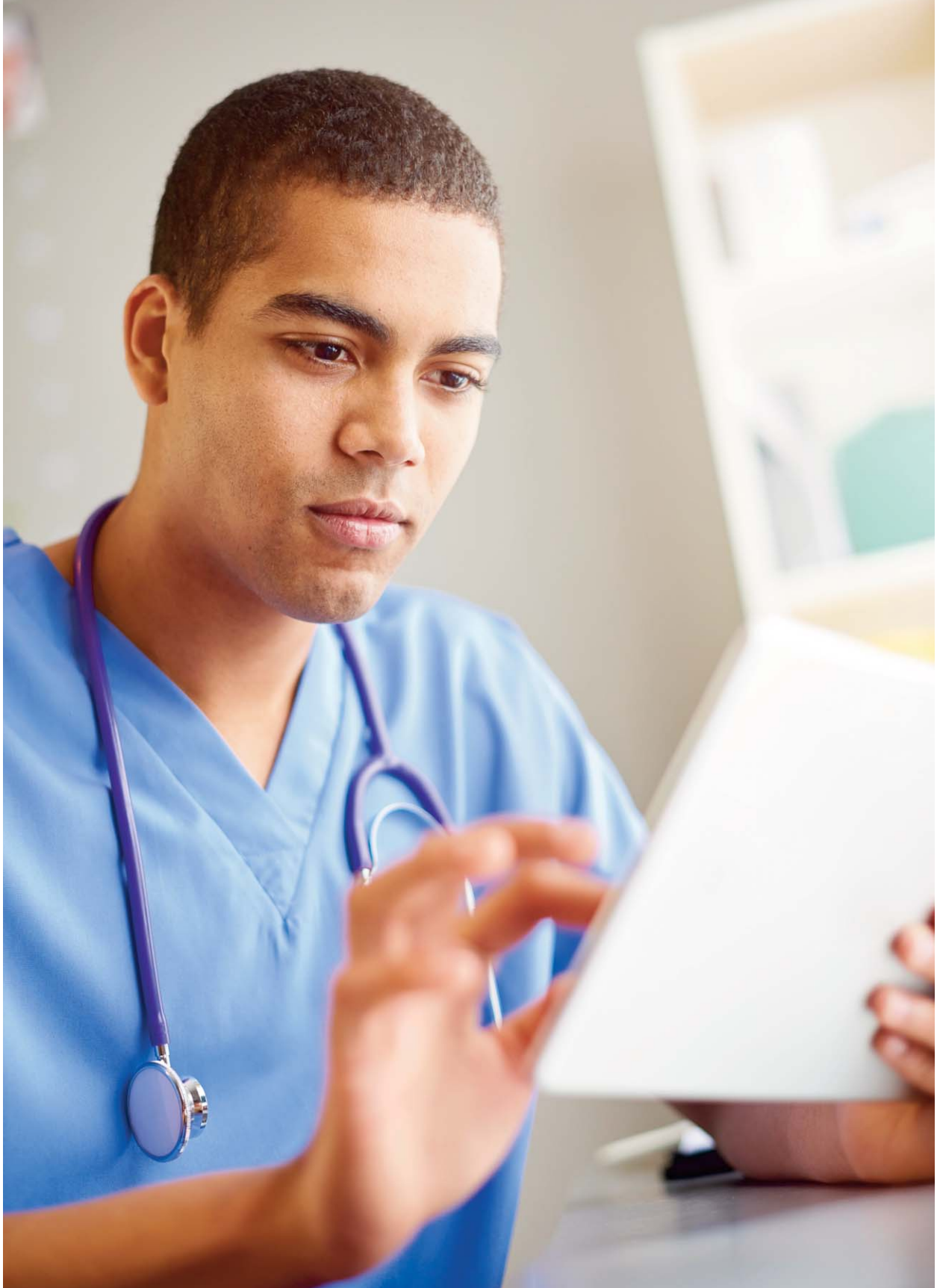


Table of Contents

Health Care Occupations and Professions by Category

Administrative and Information Services	1
Behavioral Health Services	2
Facilities Management	3
Laboratory and Technical Services	3
Nursing and Patient Care	5
Nutrition	9
Radiology	9
Therapy Services	10
Sample of Median Salaries	16
Bureau of Labor Statistics Data	
Health Occupation Education Programs in Nassau/Suffolk Counties	17
By Profession	
Nassau-Suffolk Hospital Council Member Institutions	25
In Alphabetical Order	



HEALTH CARE OCCUPATIONS/PROFESSIONS BY CATEGORY

ADMINISTRATIVE AND INFORMATION SERVICES

PATIENT ACCESS REPRESENTATIVES interview patients, verify financial data, and prepare initial patient information and medical records required to admit patients to the hospital. A high school diploma or high school equivalency is a requirement for this position.

APPLICATIONS ANALYSTS maintain and support various computer applications and assist with the installation of clinical information systems. Responsibilities include troubleshooting computer and systems problems, coordinating and/or performing software upgrades, and providing technical support. A bachelor's degree with clinical/health management experience is typically preferred.

CLINICAL INFORMATICISTS develop and maintain the software applications and databases that are utilized by physicians, nurses, and other clinicians. Other responsibilities may include designing and implementing educational programs to assist in the adoption of new medical software, training new employees, and recommending system changes to assist clinical users. The minimum education requirement is typically a bachelor's degree in nursing or pharmacy.

COMPUTER SUPPORT/HELP DESK

SPECIALISTS perform routine tasks to maintain computer equipment and provide technical assistance to end-users. Knowledge of computer and software programs is preferred.

HEALTH INFORMATION MANAGEMENT

(HIM) ACCESS REPRESENTATIVES design, implement, manage, and evaluate information systems and electronic health records. Health information managers incorporate the disciplines of medicine, management, finance,

information technology, and regulatory requirements. A bachelor's degree is required and national certification by the American Health Information Management Association (AHIMA) is preferred.

MEDICAL CODERS manage health information data provided by clinicians by ensuring accuracy, quality, completeness, and security in both paper and electronic form. They obtain detailed information regarding disease, injuries, surgical operations, and other procedures. This detailed information is translated into numeric codes by assigning diagnostic and procedural codes using a universally recognized coding system. These medical codes are used extensively for insurance reimbursement, preparation of hospital statistical reports, and by the government to identify health care concerns to the public at large. A minimum of a high school diploma is required; an associate's degree is preferred. Training is offered at community colleges and technical schools.

UNIT SECRETARIES are assigned to either inpatient or outpatient units where there is daily contact with patients. Unit secretaries streamline communications by providing relevant information to appropriate personnel, give information on patients' conditions, and direct visitors to the appropriate locations. They also process physicians' orders, such as orders to nursing, pharmacy, etc. In addition, unit secretaries make emergency calls, receive new admissions, prepare and maintain patient charts, maintain a daily log and clinic log, and perform various clerical duties as required. Unit secretaries might also be required to pick up and deliver supplies and records for the unit. Generally, a high school diploma and computer proficiency are required.

BEHAVIORAL HEALTH SERVICES

CERTIFIED BEHAVIOR ANALYSTS AND LICENSED BEHAVIOR ANALYST ASSISTANTS

work with patients (primarily those with autism and autism spectrum disorders) to implement and evaluate environmental modifications, using behavioral stimuli and consequences to produce socially significant improvements in behavior. Licensed behavior analysts design, implement, and evaluate environmental modifications. Certified behavior analyst assistants provide services and activities under the supervision of a licensed behavior analyst. Licensed applied behavior analysts must complete a master's degree program; certified behavior analyst assistants must complete a bachelor's degree program. Passage of a state-approved examination is required for both positions.

BEHAVIORAL HEALTH TECHNICIANS AND BEHAVIORAL HEALTH THERAPY AIDES

provide care to emotionally or mentally challenged individuals, usually in psychiatric hospitals or mental health clinics. They work as members of interdisciplinary teams of mental health professionals such as psychiatrists, psychologists, registered nurses, and others. In general, mental health aides help patients with personal grooming and daily living skills. Technicians participate in both the planning and implementation of individual patient treatment plans and provide therapeutic care. They may be responsible for admitting and interviewing patients, recordkeeping, assisting in administration of medication, and conducting therapy sessions. Most mental health technicians learn their skills on the job, from experienced workers or employer-provided classroom instruction. However, hospitals and nursing care facilities may require previous experience and/or certification as a nursing assistant (CNA).

MENTAL HEALTH COUNSELORS are trained in counseling and psychotherapy to treat individuals with mental and emotional disorders and other behavioral challenges. Mental health counselors demonstrate a concern for the short-term and long-term well-being of individuals, couples, families, groups, and

organizations. They use standard mental health assessment and evaluation protocols to develop patient psychosocial histories, write treatment plans, document patient progress, facilitate consultation and referral with other providers, and implement discharge plans. They may work individually or as part of a team, in private or group practices. In cases of severe and persistent mental illness, the mental health counselor works with a physician that can provide needed medical care. In New York State, a master's degree in counseling or a similar field is required. Graduates must also pass a state-approved exam and complete 3,000 hours of post-degree clinical experience under the supervision of a qualified licensed mental health professional.

PSYCHOLOGISTS study the human mind and human behavior by observing, interpreting, and recording people's interaction with others. Psychologists in health service fields provide mental health care in hospitals, clinics, schools, or private settings, but may also work in research or applied settings, such as business, industry, government, or nonprofit organizations. A doctoral degree is usually required for independent practice as a psychologist. Psychologists with a Ph.D. or Doctor of Psychology (Psy.D.) qualify for a wide range of teaching, research, clinical, and counseling positions.

REHABILITATION COUNSELORS assist people with physically, mentally, emotionally, or socially handicapping conditions to become or remain self-sufficient, productive citizens. Rehabilitation counselors help individuals with disabilities deal with societal and personal problems, plan careers, and find and keep satisfying jobs. A rehabilitation counselor builds bridges between the often isolated world of people with disabilities and their families, communities, and work environment. Rehabilitation counselors must hold a master's degree.

SOCIAL WORKERS work with individuals, groups, and communities in a medical setting to address problems related to physical, emotional, and mental illnesses or disabilities. A bachelor's degree in social work generally prepares

students for case worker responsibilities for this career. A master's degree and licensure by the New York State Department of Education is required for advanced and specialized social work. Licensed Master Social Workers and Licensed Clinical Social Workers must also complete 36 hours of continuing education during each three-year registration period.

FACILITIES MANAGEMENT

MAINTENANCE MECHANICS diagnose, repair, and replace mechanical and electrical equipment as necessary. Candidates must be proficient in the tools, instruments, and equipment necessary for maintenance and repair of electrical, mechanical, and utility systems and have a working knowledge of motors, boilers, compressors, control valves, HVAC, and other systems.

SECURITY OFFICERS (unarmed) perform security tasks to guard hospital property against fire, theft, vandalism, and illegal entry. They promote the safety of visitors and staff. These positions require a New York State security license.

STATIONARY/WATCH ENGINEERS diagnose, repair, and replace equipment and components. They perform daily chemical analysis of hospitals' boilers and chillers and make necessary adjustments. This position supports the power plant and HVAC engineers.

LABORATORY AND TECHNICAL SERVICES

BIOMEDICAL ENGINEERS may work in manufacturing, universities, health care facilities, the research departments of companies, or regulatory agencies. Biomedical engineers analyze and design solutions to problems in biology and medicine, with the goal of improving the quality and effectiveness of patient care. Potential tasks include designing systems and products, such as artificial devices that replace body parts, designing machines that diagnose medical problems, or training health care personnel on how to operate biomedical equipment. Biomedical engineers typically need a bachelor's degree in biomedical engineering.

Alternatively, candidates may get a bachelor's degree in a different field of engineering and then either get a graduate degree or on-the-job training in biomedical engineering.

BIOMEDICAL TECHNICIANS provide performance testing, repair, calibration, and safety testing of medical electronics/electromechanical equipment. It is the biomedical tech's responsibility to ensure each instrument is functioning according to the manufacturer's specifications, in addition to regulatory agency codes and standards. There are two areas of work for biomedical technicians: in-house technicians and field technicians. In-house technicians work in hospitals and for manufacturers, while field technicians work for manufacturers and third-party service providers at the customer site. The educational requirements vary and can range from on-the-job training for repairs of less complicated equipment to a bachelor's degree for repairs on more sophisticated equipment. Generally, most hospitals require an associate's degree in electronics and biomedicine.

CARDIOVASCULAR TECHNOLOGISTS assist physicians in diagnosing and treating cardiac (heart) and peripheral vascular (blood vessel) ailments with the use of imaging technology. Cardiovascular technologists and technicians conduct ultrasound or cardiovascular procedures, review doctors' interpretations and patient files, and monitor patients' heart rates. They also operate and care for testing equipment, explain test procedures, and compare findings to a standard to identify problems. Other day-to-day activities vary significantly between specialties. Cardiovascular technologists may specialize in any of three areas of practice: invasive cardiology, echocardiography, or vascular technology. Preferred requirements are a certificate from a vocational school program or an associate's degree.

CENTRAL STERILE TECHNICIANS provide the services of decontamination, preparation, packaging, sterilization, and storage and distribution of reusable medical instrumentation or devices in hospitals and ambulatory

surgery centers. Beginning in 2015, central sterile technicians must pass a nationally accredited central sterile exam and hold and maintain either the certified registered central sterile technician credential or the certified sterile processing and distribution technician credential. Central sterile technicians will also be required to complete ten hours of continuing education annually.

CLINICAL LABORATORY TECHNOLOGISTS AND CLINICAL LABORATORY TECHNICIANS perform tests to determine the absence, presence or extent of disease. They are trained in all areas of lab testing including chemistry, hematology, blood banking, and microbiology. Clinical laboratory technologists supervise technicians and assistants and perform complex tests which often require independent judgment. Clinical laboratory technicians, under limited supervision, carry out less complicated tests. Clinical laboratory technologists and technicians must have a New York State license to practice. Licensure requires education and examination. The clinical laboratory technologist must have a bachelor's degree in clinical laboratory sciences (medical technology), or complete an accredited one-year clinical laboratory technology education program in addition to a bachelor's degree in another subject. Clinical laboratory technicians must have an associate's degree in clinical laboratory technician science (medical laboratory technician).

CYTOTECHNOLOGISTS evaluate cell samples that have been shed normally, scraped from the body, or aspirated with a fine needle, for evidence of disease, such as cancer. Cytotechnologists are trained to notice subtle changes in cells so they can accurately identify precancerous, malignant, and infectious conditions. A bachelor's degree is required for licensure. Alternatively, candidates may complete an accredited cytotechnology program in addition to earning a bachelor's degree in another subject.

DIALYSIS TECHNICIANS, under general supervision, set up and operate hemodialysis units and related equipment to provide dialysis

treatment for patients with kidney disorders or failure. More recently, these roles have been filled by licensed practical nurses, but candidates must pass a national certification exam to provide the service.

ELECTROENCEPHALOGRAPHIC (EEG) TECHNICIANS AND TECHNOLOGISTS operate the EEG machine, which records electrical brain activity and helps to diagnose brain disorders such as strokes and tumors. In addition to performing the electroencephalogram test, EEG technologists explain the testing procedure to the patient and obtain important background information from the patient. They then apply the electrodes to the patient's scalp, record the EEG, and prepare the EEG record for the doctor's review. Technicians train on the job or in formal training programs generally given in clinics or hospitals. Many of these programs result either in a diploma or certification.

EKG TECHNICIANS perform electrocardiograms (EKGs), and other routine, non-invasive cardiac procedures to measure and monitor cardiac activity. The EKG technician maintains department equipment and prepares reports for physician review. Training is available at technical schools as part of "Medical Assistant" programs.

HISTOLOGIC TECHNICIANS prepare anatomic tissues (surgically removed or from a biopsy) for microscopic examination by pathologists. Most histologic technicians work in the pathology laboratory of a hospital or clinic. Others may work in medical research or independent laboratories. Histologic technicians work under supervision. Histologic technicians require an associate's degree. Additional training in histologic techniques is required. Certification exams are offered by the American Society of Clinical Pathologists.

INVASIVE CARDIOLOGY TECHNOLOGISTS specialize in invasive procedures. They assist physicians with cardiac catheterization procedures in which a small tube, or catheter, is threaded through a patient's artery. Technologists prepare patients for cardiac

catheterization and, during the procedures, they monitor patients' blood pressure and heart rate with EKG equipment. Technologists may also prepare and monitor patients during open-heart surgery and during the insertion of pacemakers and stents that open up blockages in arteries to the heart and major blood vessels. Preferred requirements include a certificate from a vocational school or associate's degree.

PERFUSIONISTS are members of the hospital surgical team with the primary responsibility of operating the heart and lung machines during open heart surgeries or respiratory failures. Perfusionists, who must complete a bachelor's degree, work under the supervision of a licensed physician. Perfusionists must be licensed in New York State. One-year limited licenses are available for candidates that wish to work while they prepare for the licensing exam.

PHLEBOTOMIST/PHLEBOTOMY TECHNICIANS draw blood from patients and donors in hospitals, blood banks, or similar facilities and prepare specimens for screening, analysis, or other medical purposes. They perform screening tests and report results. One to three months of phlebotomy certification is typically required.

POLYSOMNOGRAPHY TECHNOLOGISTS utilize a diagnostic test known as a sleep study (polysomnography) to diagnose and treat sleep disorders. A sleep study is used to gather extensive data concerning an individual's physiologic activity while sleeping. Some of the parameters measured include breathing efforts, blood oxygen levels, electrical activity of the brain (EEG), electrocardiogram (ECG), eye movement (ROC and LOC), and muscle activity (EMG). Polysomnographers provide data and make recommendations to physicians specifically trained in sleep medicine so that patients can receive appropriate therapy to treat discovered sleep disorders. Candidates must have completed an approved associate or higher degree program in polysomnographic technology and be licensed by New York State. A passing grade on an exam approved by

the Board of Registered Polysomnographic Technologists is required for licensure.

SURGICAL TECHNOLOGISTS are part of the operating room team that set up the surgical instruments and supplies for a patient's procedure. They assist in preparing patients for surgery and hand surgical instruments to the surgeon during an operation. Surgical technologists must earn a degree or certificate through a program accredited by the Commission on Accreditation of Allied Health Education Programs (CAAHEP) or the Accrediting Bureau of Health Education Schools (ABHES). Surgical technology degree programs usually take nine months to two years to complete, depending on the school, and are offered by community colleges, vocational schools, and universities. Surgical technologists are required to complete 15 hours per year of continuing education to maintain their New York State certification.

TELEMETRY TECHNICIANS, check the heart rhythm patterns of patients to detect abnormal pattern variations. They usually work in the intensive care or cardiac care units of hospitals. These technicians are responsible for reviewing patients' records to determine normal heart rhythms. They monitor current patterns and note any deviations, and notify nurses and doctors when medical attention is needed. Most cardiac monitor technicians are trained on the job in hospital programs that last from one month to a year. A high school diploma or its equivalent is required for acceptance into a hospital's training program. Courses in health, biology, and computer technology are recommended.

NURSING & AND PATIENT CARE

CERTIFIED NURSE ANESTHETIST Administer anesthesia, monitor patient's vital signs, and oversee patient recovery from anesthesia in a variety of clinical settings. CRNAs may assist anesthesiologists, surgeons, other physicians, or dentists. They must be registered nurses who have specialized graduate education through a program accredited by the Council on Accreditation of Nurse Anesthesia



Programs. They must also pass a national certification exam offered by the National Board of Certification and Recertification of Nurse Anesthetists.

CLINICAL NURSE SPECIALIST is an RN who has completed advanced clinical nursing education (usually a master's degree) and is certified by New York State as a clinical nurse specialist. New York certifies clinical nurse specialists in the following specialties: Adult Health; Pediatrics; Oncology; and Psychiatry/Mental Health.

DENTAL HYGIENISTS AND DENTAL ASSISTANTS are part of the oral health care team. Dental hygienists typically perform cleanings, apply preventative treatments, and assist dentists during advanced procedures. Hygienists achieve an associate's degree at a community college or vocational school and must pass a New York State licensure exam. Certified dental assistants perform functions such as taking patient histories, making impressions for dental casts, taking x-rays, and educating patients about oral health. Dental assistants must complete a certificate program at a community college or vocational school, typically lasting nine to eleven months, and pass a state-approved certification exam.

EMERGENCY MEDICAL TECHNICIANS (EMT) AND PARAMEDICS (EMT-P) complete a state certification program, following which the EMT or EMT-P may act in a voluntary capacity with a fire or ambulance department and may seek employment in many different settings. Typically, the EMT responds to medical emergencies and provides immediate care to the critically ill or injured. Paramedics may provide a higher level of emergency services based on county and state guidelines. Typical care provided by EMTs and paramedics may include administering cardiac resuscitation, treating shock, providing initial care to poison or burn victims, and transporting patients to appropriate hospitals for definitive care. Training programs may be given by hospitals, community colleges, fire houses, and/or police departments. Courses run from approximately 130

hours to in excess of 400. All advanced training courses are given in conjunction with on-site participation in hospitals. Some colleges offer EMT training at the associate's degree level.

HOME HEALTH AIDES provide services to homebound or disabled individuals and their families under the supervision of home care or social service agencies. Aides provide basic patient care under direct nursing supervision. They may, bathe and feed patients, change linens and make beds. Home health aides in New York State are required to successfully complete a 75-hour training and competency evaluation program, which is commonly provided on the job by the agency. The training program includes classroom and supervised practical training in a laboratory, patient's home or other health care setting in which the trainee demonstrates knowledge while performing tasks on an individual under the direct supervision of a registered nurse or licensed practical nurse. Home health aides can go on to complete an additional 125 hours of training to become an advanced home health aide. Advanced home health aides have an expanded scope of practice that allows for medication administration and injections.

LICENSED PRACTICAL NURSES (LPNS) provide basic nursing care under the supervision of registered nurses or physicians. They give routine bedside nursing care to patients and assist registered nurses with patients who are more seriously ill. Work settings include hospitals, nursing homes, extended care facilities, physician offices, and private homes. Generally, training is an 18-month program at a state-approved school of practical nursing that prepares candidates for a national licensure exam. Most programs require a high school diploma or equivalent.

MEDICAL ASSISTANTS, PATIENT CARE TECHNICIANS AND PATIENT CARE AIDES perform administrative and clinical tasks to keep the offices of physicians, podiatrists, chiropractors, and other health practitioners running smoothly. The duties of medical assistants vary from office to office, depending

on the location and size of the practice and the practitioner's specialty. Medical assistants may perform administrative tasks, such as updating and filing patients' medical records, completing insurance forms, arranging for hospital admissions and laboratory services, and performing general administrative tasks. Clinical duties may include taking medical histories and recording vital signs, explaining treatment procedures, preparing patients for examinations, and assisting physicians during examinations. Medical assistants may collect and prepare laboratory specimens and sometimes perform basic laboratory tests on the premises. Medical assistants typically work in non-acute healthcare settings. Patient care technicians and aides provide similar services to patients in acute care settings and often have phlebotomy skills that are frequently utilized.

NURSE'S AIDES assist nursing staff by performing various routine patient care activities such as bathing, feeding, and moving patients. Candidates must pass the New York State Nurse Assistant Certification Exam to become certified for employment. Courses are offered in vocational schools and can be obtained within a few months.

NURSE MIDWIFE A New York State licensed midwife is a health care provider who may care for the health needs of pre-adolescent, adolescent, and adult women throughout their life span. Licensed midwives provide primary well woman health care including: gynecologic care, and care during pregnancy and childbirth, as well as care of the newborn following birth. In New York State, a master's degree in midwifery or a related field and successful completion of an exam developed and administered by the American Midwifery Certification Board are requirements for licensure.

NURSE PRACTITIONERS are advanced practice registered nurses who provide a broad range of health care services. Nurse practitioners provide care in family practice offices, urgent care centers, rural health clinics, and hospitals. They treat both acute and chronic conditions through comprehensive history-taking and

physical exams, prescribing medications and physical therapy, and ordering tests and therapies for patients within their scope of practice. An NP can serve as a patient's gateway health care provider and may see patients of all ages depending on the designated scope of practice. NPs must complete a specific advanced nursing education program (usually a master's degree) and training in the diagnosis and management of common, as well as complex medical conditions. In New York State, they must complete coursework in pharmacology to prepare them for prescribing privileges. They can be trained and nationally certified in areas such as pediatrics, geriatrics, family medicine, psychiatry and acute care.

PHARMACISTS are experts in the science of drugs and the art of drug therapy. They dispense drugs prescribed by physicians and other health practitioners and educate and inform consumers and patients about the use and possible effects of medication. Pharmacists also advise physicians and other health practitioners on the selection, dosages, interactions, and effects of medications. To become a licensed pharmacist, candidates must graduate with a doctor of pharmacy (PharmD) degree from an accredited college of pharmacy, serve an internship under a licensed pharmacist, and pass a state examination (NAPLEX).

PHARMACY TECHNICIANS assist licensed pharmacists in providing medication and other health care products to patients. Technicians usually perform routine tasks to help prepare prescribed medication, such as counting tablets and labeling bottles. They also perform administrative duties, such as answering phones, stocking shelves, and operating cash registers. Technicians refer any questions regarding prescriptions, drug information, or health matters to a pharmacist. To be eligible, candidates must have a high school diploma or GED, have no felony convictions of any kind within 5 years of applying, and no drug or pharmacy-related felony convictions at any time. In New York State, only registered pharmacy technicians may to assist with preparing a variety of medication, such as intravenous medications. To meet the

certification requirements for licensure as a registered pharmacy technician applicants must receive certification from a nationally accredited pharmacy technician program.

PHYSICIAN ASSISTANTS (PA) provide health care services with the direction and responsible supervision of a doctor of medicine or osteopathy. The physician-PA team relationship is fundamental to the PA profession and enhances the delivery of high quality health care. Within the physician-PA relationship, PAs make clinical decisions and provide a broad range of diagnostic, therapeutic, preventive, and health maintenance services. The clinical role of PAs includes primary and specialty care in medical and surgical practice settings. The PA role is centered on patient care and may include educational, research, and administrative activities. Educational requirements for licensure as a registered physician assistant include completion of a program for the training of physician assistants that is approved by the New York State Education Department as licensure qualifying or accredited by the Accreditation Review Commission on Education for the Physician Assistant (ARC-PA). The average PA program curriculum runs approximately 26 months, post-bachelor's degree. PAs must also pass a state licensing exam.

REGISTERED NURSES (RNS) provide care, advice, and education to patients, families, and members of the community. RNs are part of a collaborative team of health care specialists. They consult and coordinate with team members to assess, plan, implement, and evaluate patient care plans. Nurses can practice with either a two-year associate's degree or a four year bachelor's degree. Most hospitals now require that new hires have a four-year degree. Beginning in June 2019, associate-trained nurses will be required to obtain a baccalaureate degree within ten years of initial licensure in New York State.

NUTRITION

DIABETES COUNSELORS AND DIABETES EDUCATORS are most often registered nurses or registered dietitians with bachelor's degrees who have additionally completed a certification course in diabetes counseling. They educate diabetics on proper nutrition and medication management.

DIETITIANS promote and maintain health, prevent or treat illness, and aid rehabilitation through nutrition, education, and diet. Certified dietitians (also called certified nutritionists) may manage a food service, plan menus for people with health problems, and give instruction on proper diet. To become a certified dietitian, candidates must complete an associate's degree program in dietetics/nutrition and have eight years of professional experience, or hold a bachelor's degree and have six months of relevant experience; either of these educational tracks qualifies candidates to sit for a state-approved licensure exam.

DIETETIC TECHNICIANS AND DIETETIC ASSISTANTS assist dietitians in food administration and nutrition care services. Dietetic technicians complete an associate's degree while dietetic assistants usually complete a one-year program. These programs generally are given in vocational schools and community colleges.

RADIOLOGY

MEDICAL PHYSICIST is a person who applies the principles of physics to direct, contain, and control radiation used for medical purposes. Some of the responsibilities of medical physicists are: protecting patients and others from unsafe and unnecessary exposure to radiation; obtaining high quality images; and delivering the proper dose of radiation to the specified area. Some of the functions of a medical physicist are: calculating patient dosage; analyzing and interpreting measurements associated with inspecting, testing, and calibrating equipment; overseeing proper disposal of radioactive waste, and designing the shielding needed around radiation

sources. In New York State, medical physicists must complete a master's degree in medical physics and pass a state licensing exam.

MRI (RADIOLOGIC) TECHNOLOGIST are the medical professionals who perform diagnostic imaging examinations, either in a hospital or free-standing radiology center. Radiologic technologists who perform imaging examinations are responsible for accurately positioning patients and ensuring that a quality image is produced. They work closely with radiologists, the physicians who interpret medical images to either diagnose or rule out disease or injury. Radiologic technologists may specialize in computed tomography, magnetic resonance imaging (MRI), mammography, and other types of imaging and must be certified in these specialty areas by the American Registry of Radiologic Technologists. A two-year program in radiography given by hospitals or community colleges and a passing grade on a national certification examination is required. There are some four-year bachelor's programs.

NUCLEAR MEDICINE TECHNOLOGISTS, under a physician's supervision, use a scanner to create images of a patient's body. They prepare and administer radioactive drugs to patients undergoing the scan. Generally, training programs are two years long and are offered by community colleges, universities, hospitals, or the military. A certificate from an approved Nuclear Medicine Program, or certification by the Nuclear Medicine Technologist Certification Board or the American Registry for Radiologic Technologists is required.

RADIATION THERAPY TECHNOLOGISTS apply radiation to the human body under the supervision of a radiologist to treat disease, often cancer. A one- or two-year program in radiation therapy technology, which may be given by a hospital or community college, is usually required. Several bachelor's degree programs are also available.

ULTRASOUND TECHNOLOGISTS use special imaging equipment that directs sound waves into a patient's body (commonly known as

ultrasounds, sonograms, or echocardiograms) that assess and diagnose various medical conditions. Minimum education requirements are the completion of a two-year program with certificate and passage of a diagnostic medical sonography exam.

X-RAY (RADIOLOGIC) TECHNOLOGISTS are the medical professionals who perform diagnostic imaging examinations, either in a hospital or free-standing radiology center. Radiologic technologists who perform imaging examinations are responsible for accurately positioning patients and ensuring that a quality image is produced. They work closely with radiologists, the physicians who interpret medical images to either diagnose or rule out disease or injury. Radiologic technologists may specialize in computed tomography, magnetic resonance imaging (MRI), mammography, and other types of imaging and must be certified in these specialty areas by the American Registry of Radiologic Technologists. A two-year program in radiography given by hospitals or community colleges and a passing grade on a national certification examination is required. There are some four-year bachelor's programs.

THERAPY SERVICES

AUDIOLOGISTS are specialists in communication disorders. Hearing and balance disorders are assessed and treated by an audiologist. Audiologists identify the type of hearing loss and select, fit, and dispense amplification systems such as hearing aids. A doctoral degree, 36 weeks of supervised experience and a passing grade on a national exam are required for licensure.

OCCUPATIONAL THERAPISTS AND OCCUPATIONAL THERAPY ASSISTANTS are licensed health care professionals who are trained to treat people of all ages who must learn or regain the skills needed to live independently. Occupational therapists can work in a variety of treatment settings including hospitals, nursing homes, schools, private practice, or home care. Within hospitals, occupational therapists may

work in rehabilitative units, acute care units or outpatient departments. Occupational therapists must complete a bachelor's degree in occupational therapy and have six months of supervised experience, then pass a state-approved certification exam to obtain licensure. Occupational therapy assistants carry out treatment plans under the direction of a licensed occupational therapist. They must complete an associate's degree program, which typically includes at least three months of supervised experience, and pass a state-approved certification exam. Both occupational therapists and occupational therapy assistants are required to complete 36 hours of continuing education every three years.

PHYSICAL THERAPISTS AND PHYSICAL THERAPY ASSISTANTS work with people who have been physically disabled by illness, accident, or congenital anomaly. They treat a wide variety of conditions, including musculoskeletal and orthopedic conditions, neurological conditions, balance and coordination disorders, gait disorders, and sports and athletic injuries. Upon a physician's referral, therapists evaluate the extent of disability and plan a treatment program. Physical therapy assistants perform routine treatment procedures as directed by the therapist, assist with more complex procedures, and may perform some administrative tasks. They work under the direction of a physical therapist. Physical therapists complete a master's degree or an entry level doctorate of physical therapy degree (DPT) and pass the National Physical Therapy Examination to obtain licensure. Physical therapy assistants complete an associate's degree.

RECREATIONAL THERAPISTS plan, direct, and coordinate recreational programs for individuals with a disability or illness. They use a variety of methods such as music, dance, art, and exercise. In long-term and residential care facilities, recreational therapists use leisure activities—especially structured group programs—to improve and maintain their clients' general

health and well-being. They assess clients using information from observations, medical records, standardized assessments, the medical staff, the clients' families, and the clients themselves, and then develop therapeutic interventions. Most entry-level recreational therapists need a bachelor's degree in therapeutic recreation, or in recreation with a concentration in therapeutic recreation. People may qualify for paraprofessional positions with an associate's degree in therapeutic recreation or another subject related to health care. An associate's degree in recreational therapy; training in art, drama, or music therapy; or qualifying work experience may be sufficient for activity director positions in nursing homes.

RESPIRATORY THERAPISTS, on physicians' orders, treat patients with heart-lung problems such as asthma, COPD, or heart failure. They administer oxygen, various types of gases, or aerosol drugs. They may do diagnostic testing related to respiratory functions or offer rehabilitation for patients with chronic lung disease or cardiac problems. Therapists complete a two-year associate's or four-year bachelor's degree, and must complete a one-year certification program to be licensed by the State of New York.

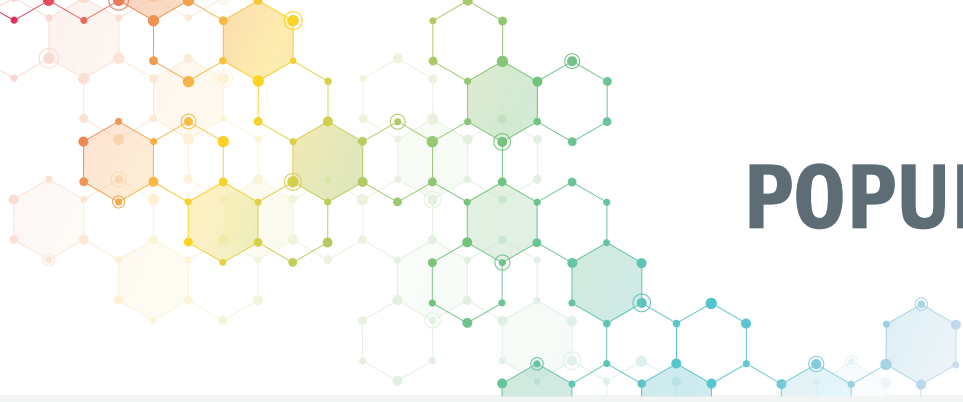
RESPIRATORY THERAPY TECHNICIANS, under the supervision of a respiratory therapist, perform tasks and responsibilities within the framework of the practice of respiratory therapy. Tasks include the performance of cardiopulmonary evaluation, respiratory therapy, treatment techniques, and education of the patient, family, and public. Respiratory therapy technicians must be licensed by the State of New York.

SPEECH-LANGUAGE PATHOLOGISTS are specialists in communication disorders. Speech-language pathologists assess and treat speech and language development disorders and swallowing difficulties. A master's degree and licensure by New York State are required.



	High School or GED	Specialty Training	Certification	Associates degree	Bachelor's degree	Master's degree	Doctoral Program	NYS License
Administrative and Information Services								
Patient Access Representative	X							
Applications Analysts					X	X		
Clinical Informaticists					X			
Computer Support/Help Desk Specialists	X plus exp.							
Health Information Management Access Representatives			preferred		X			
Medical Coders	X	X	X	X				
Unit Secretaries	X							
Behavioral Health Services								
Licensed Behavior Analysts			X			X		X
Certified Behavioral Analyst Assistants			X		X			
Behavioral Health Technicians	X				preferred			
Behavioral Health Therapy Aides	X							
Mental Health Counselors						X		X
Psychologists							X	
Rehabilitation Counselors						X		
Social Workers						X		some
Facilities Management								
Maintenance Mechanics	X	X						
Security Officers	X							X
Stationary/Watch Engineers	X	X						
Laboratory and Technical Services								
Biomedical Engineers					X			
Biomedical Technicians				X	preferred			
Cardiovascular Technologists		X		X				
Central Sterile Technicians	X		X					
Clinical Laboratory Technologists					X			X
Clinical Laboratory Technicians				X				X
Cytotechnologists					X			X
Dialysis Technicians	X		X					
Electroencephalographic Technicians and Technologists	X		X					
EKG Technicians	X	X	X					
Histologic Technicians			X	X				X
Perfusionists					X			X
Phlebotomist/Phlebotomy Technicians	X	X						
Polysomnographic Technologists				X				X
Surgical Technologists			X	X				
Telemetry Technicians	X	X						

	High School or GED	Specialty Training	Certification	Associates degree	Bachelor's degree	Master's degree	Doctoral Program	NYS License
Nursing and Patient Care								
Certified Nurse Anesthetist			X		BSN	X		
Clinical Nurse Specialist					BSN	X		X
Dental Hygienists				X				X
Dental Assistants		X	X					
Emergency Medical Technicians and Paramedics	X	X						X
Home Health Aides		X						
Licensed Practical Nurse				X				
Medical Assistants/PCT/PCA	X	X	X	preferred				
Nurse's Aide	X	X						
Nurse Midwife		X			BSN	X		X
Nurse Practitioners						X		X
Pharmacists							X	X
Pharmacy Technicians	X		X					X
Physician Assistants						X		X
Registered Nurses					X			X
Nutrition								
Diabetes Counselors and Diabetes Educators					X			
Dieticians			X		X			X
Dietetic Technicians and Dietetic Assistants		X						
Radiology								
Medical Physicist		X	X			X		X
MRI Technologists			X	X				
Nuclear Medicine Technologists			X	X				
Radiation Therapy Technologists		X		X				
Ultrasound Technologists			X	X				
X-Ray Technologists			X	X				
Therapy Services								
Audiologists							X	X
Occupational Therapists					X			X
Occupational Therapy Assitants			X	X				
Physical Therapists						X	X	X
Physical Therapy Assistants				X				
Recreational Therapists					X			
Respiratory Therapists			X	X	preferred			
Respiratory Therapy Technicians		X						X
Speech-Language Pathologists						X		X



POPULATION HEALTH

A New Model of Care

If you think a career in healthcare is limited to working in a hospital, a doctor's office, or even a pharmacy, you need to think again.

On Long Island, and in just about every other place in the United States, healthcare delivery is changing. A new model of care known as population health is taking hold. It is based on the notion that when care is better coordinated between doctors, hospitals, labs, pharmacies, and every other health and social service that is needed, patients do much better, enjoy a better quality of life, healthcare resources are used more efficiently, and overall costs are lower.

Population health links a variety of non-traditional resources with traditional care that is provided in a doctor's office or a hospital to offer patients totally coordinated and integrated care that takes into consideration all those other factors that play a role in a person's health. These include affordable and adequate housing, steady employment, access to transportation, safe places to exercise, access to nutritious and affordable foods and many more. These are called the social determinants of health because researchers have discovered that environment and lifestyle play a significant role in health.

This focus has ushered in a range of new jobs in the health and social services sector. Care managers and community health workers follow up with patients to make sure patients are taking their medicine, are getting to their doctor appointments, are able to pay the rent, and are eating the right foods. The list is endless. Training requirements for community

health workers and care managers vary. Patient navigators play a similar role, but are generally more focused on helping patients wade through a hospitalization or critical episode of illness.

The success of population health-based care also depends on reliable information technology. Patient information must be shared between providers for coordinated care to really work. Jobs in this area require skills in information technology, computer hardware and software, and information systems management. Telemedicine involves care outside of the traditional walls of a doctor's office or a hospital, and it is the basis for lots of the home-based and offsite care that is becoming more popular.

Traditional home-based care services, usually provided by nursing aides and home healthcare aides, is also necessary for the population health-based care approach. As our aging population increases in number with every passing year, demand for aides will increase.

Care at the population scale results in lots of data. Whether it is collected for clinical decision making, public health surveillance, or to help better run the business of healthcare, someone needs to interpret and manage it. There are opportunities for data analysts and data scientists.

Population health truly offers many career choices. Think about your interests and skills and how you might be able to use them in new and exciting ways to improve the health of the Long Island population.

SOCIAL DETERMINANTS OF HEALTH

The social determinants of health are the conditions in which we are born, we grow and age, and in which we live and work. The following factors impact our health and wellbeing.

Source: NHS Health Scotland



Childhood experiences



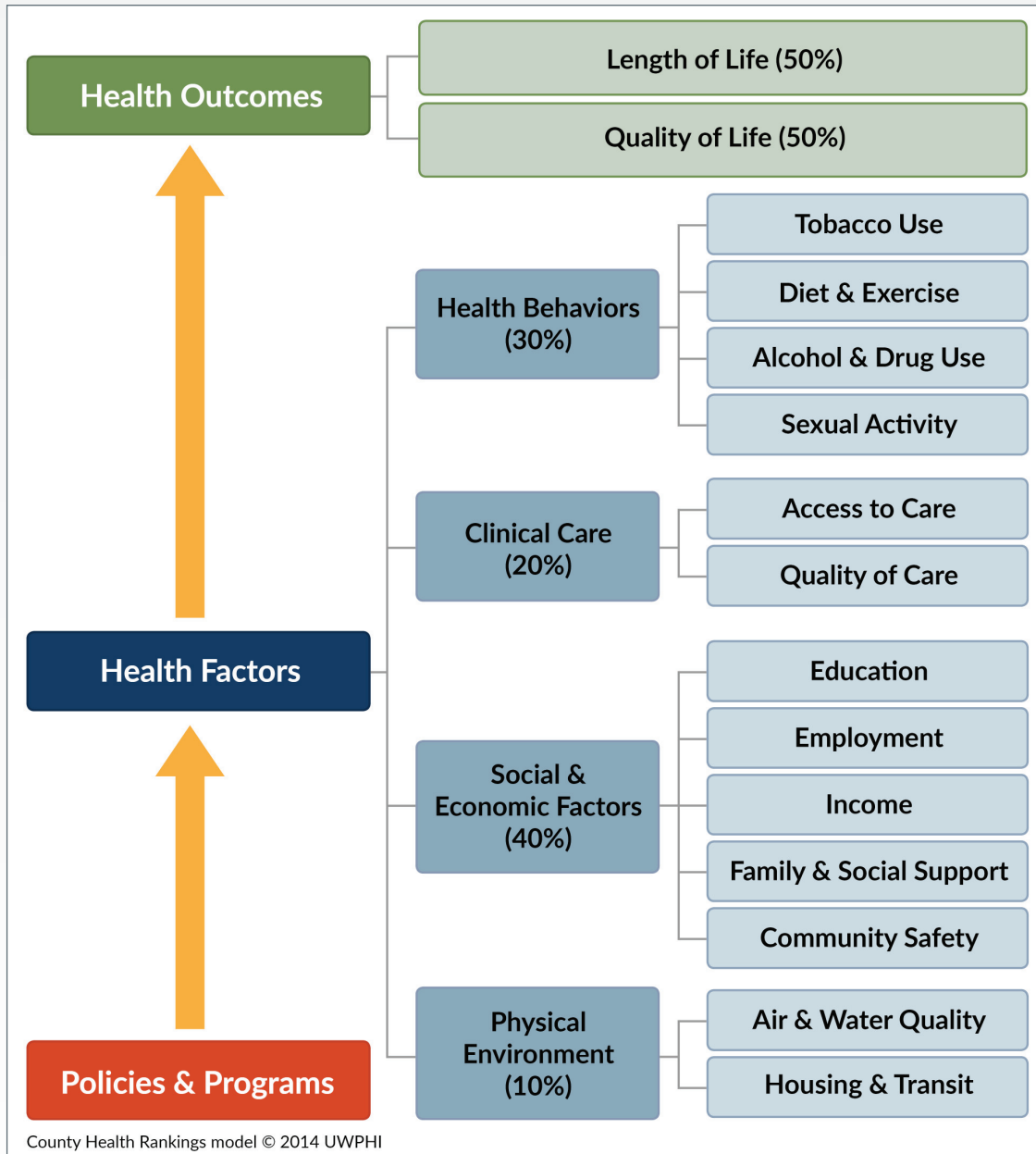
Housing



Education



The Healthcare Career Guide is a joint project of the Nassau-Suffolk Hospital Council (NSHC) and the Long Island Health Collaborative (LIHC). The LIHC, an initiative of the Hospital Council, is a coalition of all of Long Island's hospitals, two local county health departments, dozens of community-based health and social service organizations, colleges and schools, health plans, businesses and other partners, committed to improving the health of Long Islanders through the reduction of chronic diseases, especially those related to obesity. LIHC's activities are funded by a New York State Population Health Improvement Program grant.



Social support



Family income



Employment



Our communities



Access to health services

SAMPLE OF MEDIAN SALARIES

*U.S., 2020

OCCUPATION/PROFESSION	MEDIAN SALARY*	OCCUPATION/PROFESSION	MEDIAN SALARY*
Audiologists	\$81,030	Nurse's Aides, Certified	\$30,830
Behavioral Health Aides	\$31,570	Occupational Therapists	\$86,280
Biomedical Engineers	\$92,620	Occupational Therapy Assistants	\$60,950
Biomedical Technicians	\$45,340	Pharmacists	\$128,710
Cardiovascular Technologists	\$70,380	Pharmacy Technicians	\$35,100
Clinical Laboratory Technicians	\$54,180	Phlebotomists	\$36,320
Dental Assistants	\$36,850	Physical Therapists	\$91,010
Dental Hygienists	\$77,090	Physical Therapy Assistants	\$49,970
Diagnostic Medical Sonographers	\$70,380	Physician Assistants	\$115,390
Dietetic Technicians	\$30,110	Psychologists	\$82,180
Dietitians	\$63,090	Radiologic and MRI Technologists	\$63,710
Emergency Medical Technicians	\$36,650	Recreational Therapists	\$47,710
Home Health Aides	\$27,080	Registered Nurses	\$75,330
Licensed Practical Nurses	\$48,820	Rehabilitation Counselors	\$37,530
Licensed Mental Health Counselors	\$47,660	Respiratory Therapists	\$62,810
Maintenance Mechanics	\$54,920	Respiratory Therapy Technicians	\$49,970
Medical Assistants	\$35,850	Security Guards	\$31,080
Medical Records and Health Information Technicians	\$44,090	Social Workers	\$51,760
Nuclear Medicine Technologists	\$79,590	Speech-Language Pathologists	\$80,480
Nurse Practitioners	\$117,670	Stationary Engineers	\$64,680
		Surgical Technologists	\$49,710

Source: U.S. Bureau of Labor Statistics' Occupational Employment Statistics Survey, 2020.

Note: Salaries are the national medians for all people employed in those professions, not for entry-level hires. Data provided are for reference only and do not represent the salary scales of any local employers.

HEALTH OCCUPATION EDUCATION PROGRAMS IN NASSAU/SUFFOLK COUNTIES

Profession	Educational Institution	Degree Program
Applications Analyst	Adelphi University	B.S., M.S. Computer Science
	Farmingdale State College	B.S. Computer Science
	Hofstra University	B.B.S. in Information Systems or Business Analytics, B.A. in Computer Science, B.S. in Computer Science, Computer Engineering, or Cyber Security, dual B.S./M.S., MBA
	LIU Post	B.S. in Computer Science, M.S. in Data Analytics
	Molloy College	B.A., B.S. in Computer Information Systems, Computer Science, or Computer Studies
	Nassau Community College	A.S. Computer Science
	St. Joseph's College	B.S. Computer Science
	Stony Brook University	B.S., M.S., Ph.D. in Computer Science
	Suffolk Community College	A.A.S. in Computer Science or Information Technology or Computer Information Systems
Applied Behavior Analysts	LIU Post	M.A. in Behavior Analysis, Advanced Certificate in Applied Behavior Analysis
	St. Joseph College	Advanced Certificate in Applied Behavior Analysis
Audiologist	Adelphi University	Au.D.
	Hofstra University	Au.D.
	Molloy College	B.S., M.S. in Speech-Language Pathology
	St. Joseph's College	B.A.
Behavioral Health Technician/ Behavioral Health Therapy Aide	BOCES (Eastern Suffolk, Nassau, and Western Suffolk)	Certificate as a nurse assistant
Biomedical Engineers	Hofstra University	B.E. in Engineering, B.S. in Bioengineering
	LIU Post	M.S. in Biomedical Science
	New York Institute of Technology	B.S. in Biomedical Science
	Stony Brook University	B.M.E., M.S., Ph.D. in Biomedical Engineering
Cardiac Monitor Technician/Telemetry Technician	Western Suffolk BOCES	Certificate
Cardiovascular Technologist	Molloy College	A.A.S. in Cardiovascular Technology
Central Sterile Supply Technicians	LIU Brooklyn	Certificate
	Western Suffolk BOCES	Certificate, Central Service Technician

Profession	Educational Institution	Degree Program
Clinical Informaticist Advanced Certificate, also see Registered Nurse	Adelphi University	M.S. in Healthcare Informatics
	Farmingdale State College	See Registered Nurse
	Molloy College	See Registered Nurse
	New York Institute of Technology	See Registered Nurse
	St. Joseph's College	See Registered Nurse
	Stony Brook University	M.S. in Applied Health Informatics, also Registered Nurse
Clinical Information Systems Specialist	Hofstra University	B.B.A. in Information Systems, M.S. in Health Informatics
	LIU Post	B.S.
	St. Joseph's College	M.B.A. in Health Information Systems, Advanced Certificate in Management of Health Information Systems
	Stony Brook University	B.S. in Information Systems
Clinical Laboratory Technologists	Farmingdale State College	B.S. in Medical Laboratory Science
	LIU Post	B.S. in Biomedical Sciences: Clinical Laboratory Science, M.S. in Clinical Laboratory Science
	St. Joseph's College	B.S. in Medical Technology
	Stony Brook University	B.S. in Clinical Laboratory Science
Clinical Laboratory Technicians	Nassau Community College	A.A.S. in Medical Laboratory Technician
Computer Support/Help Desk Specialists		High School Diploma
Cytotechnologist	CUNY Hunter College	Advanced Certificate
Dental Assistant	Eastern Suffolk BOCES	Certificate
	Nassau BOCES	Certificate
	Nassau Community College	Certificate
	Stony Brook University	Certificate
Dental Hygienist	Farmingdale State College	A.A.S., B.S. in Dental Hygiene
Diabetes Counselor/Educator	Adelphi University	See Registered Nurse and/or Dietitian Listings
	Farmingdale State College	
	LIU Post	
	Molloy College	
	New York Institute of Technology	
	St. Joseph's College	
	Stony Brook University	
Diagnostic Medical Sonographer/ Ultrasound Technologist	Hunter Business School	Certificate
	Western Suffolk BOCES	Certificate

Profession	Educational Institution	Degree Program
Dietitians and Clinical Nutritionist	Adelphi University	M.S. in Nutrition
	Farmingdale State College	B.S. in Nutrition Science
	Hofstra University	B.S. in Health Science
	LIU Post	B.S., M.S. in Nutrition, Dietetic internship program for B.S. students
	Nassau Community College	A.S. in Food and Nutrition
	New York Institute of Technology	M.S. in Clinical Nutrition
	Stony Brook University	Advanced Certificate, M.S. in Nutrition
Dietetic Technician	Nassau Community College	Certificate in Dietary Management
	Suffolk County Community College	Certificate in Dietetic Technician
Echocardiography Technician (Cardiac Sonographers)	Hunter Business School	A.A.S.
	Western Suffolk BOCES	Certificate
EKG Technician	Eastern Suffolk BOCES	Certificate
	Nassau Community College	Certificate
	Western Suffolk BOCES	Certificate
Emergency Medical Technician/ Paramedic	Long Island Educational Opportunity Center	Certificate
	Nassau Community College	Certificate
	Stony Brook University	Certificate, A.A.S.
	Suffolk County Community College	A.A.S.
Health Information Manager	Adelphi	M.S., Advanced Certificate in Healthcare Informatics
	LIU Post	B.S. Health Information Management, one-year post-BA program for career changes, PhD in Health Informatics
	Molloy College	M.B.A. in Health Care Management, A.A.S. to B.A. in Health Service Leadership
	Nassau Community College	A.A.S., Certificate in Health Information Technology
	St. Joseph's College	M.S. in Health Care Management, M.B.A. in Health Care Management-Health Information Systems, Advanced Certificate in Management of Health Information Systems
	Stony Brook University	M.S. in Applied Health Informatics
	Suffolk County Community College	A.A.S. in Health Information Technology/Medical Records
Histologic Technician	Broome Community College	A.A.S.
	SUNY Cobleskill	A.A.S.
Histologic Technologist	SUNY Cobleskill	B.S. plus one year Histology Program
Home Health Aide	Eastern Suffolk BOCES	Certificate, Home Health Care Aide
Invasive Cardiology Technologist	Molloy College	A.A.S. in Cardiovascular Technology
Licensed Mental Health Counselor	LIU Post	M.S.
	Molloy College	M.S. in Clinical Mental Health Counseling
	SUNY Old Westbury	M.S.
	Hofstra University	M.S.

Profession	Educational Institution	Degree Program
Licensed Practical Nurse	Eastern Suffolk BOCES	Practical Nursing Certificate
	Hunter Business School	Practical Nursing Certificate
	Suffolk County Community College	Practical Nursing Certificate
	Western Suffolk BOCES	Practical Nursing Certificate
Maintenance Mechanic		High School Diploma
Medical Assistant	Branford Hall Institute	Certificate
	Eastern Suffolk BOCES	Certificate
	Hunter Business School	Certificate
	Nassau BOCES	Certificate
	Molloy College	Certificate
	Western Suffolk BOCES	Certificate
Medical Records Technician/Coder	Branford Hall Institute	Certificate
	Eastern Suffolk BOCES	Certificate
	Hunter Business School	Certificate
	Molloy College	Certificate in Certified Coding Specialist Preparation or Health Care Billing-Physician and Hospital Billing
	Nassau BOCES	Certificate
	Nassau Community College	Certificate, A.A.S. in Health Information Technology
	Suffolk County Community College	Certificate, A.A.S. in Health Information Technology/Medical Records
	Western Suffolk BOCES	Certificate
Nuclear Medicine Technologist	Molloy College	A.A.S., B.S. in Nuclear Medicine Technology
Nurse Aide/CNA	Long Island Educational Opportunity Center	Certificate
	Nassau BOCES	Certificate
Nurse Practitioner	Adelphi University	M.S., D.N.P., Adult Gerontology Primary Care Nurse Practitioner Program; M.S., Advanced Certificate, Psychiatric-Mental Health Nurse Practitioner (PMH-NP) Program
	LIU Post	M.S.
	Molloy College	M.S.
	St. Joseph's College	M.S. in Adult Gerontology Primary Care Nurse Practitioner
	Stony Brook University	M.S., D.N.P. Curriculums: Adult-Gerontology Primary Care, Pediatric Primary Care, Neonatal, Women's Health, Psychiatric, Nurse Midwifery, Family Health)
Occupational Therapist	Hofstra University	B.S.
	New York Institute of Technology	Combined B.S./M.S., M.S.
	Stony Brook University	M.S.
Occupational Therapy Assistant	Suffolk County Community College	A.A.S.

Profession	Educational Institution	Degree Program
Perfusionist	Hofstra University	M.S. Cardiovascular Sciences and Perfusion Medicine
	LIU Post	M.S.
Pharmacist	Hofstra University	B.S. Chemistry
	LIU Brooklyn	PharmD
	LIU Post	B.A. Chemistry
	St. John's University	PharmD
	Stony Brook University	B.S. in Pharmacological Sciences, M.S., Ph.D. in Molecular and Cellular Pharmacology
	Touro College of Pharmacy	PharmD
Pharmacy Technician	Western Suffolk BOCES	Certificate
	L.I. Educational Opportunity Center	Certificate
	Nassau Community College	Certificate
Phlebotomist/Phlebotomy Technician	Eastern Suffolk BOCES	Certificate
	Nassau BOCES	Certificate
	Stony Brook University	Certificate
	Western Suffolk BOCES	Certificate
Physical Therapist	Adelphi University	B.S. Physical Therapy
	Hofstra University	B.S. Health Science
	New York Institute of Technology	Entry-level D.P.T., Combined B.S./D.P.T.
	Stony Brook University	D.P.T., transition program for B.S. physical therapists to achieve DPT
Physical Therapist Assistant	Eastern Suffolk BOCES	Certificate
	Long Island Educational Opportunity Center	Certificate
	Nassau BOCES	Certificate
	Nassau Community College	A.A.S.
	Suffolk County Community College	A.A.S.
	Western Suffolk BOCES	Certificate
Physician's Assistant	Hofstra University	B.S. in Health Science, B.S./M.S. Dual Program
	New York Institute of Technology	Combined B.S./M.S. Physician Assistant
	Stony Brook University	M.S. Physician Assistant, transitional program for B.A. physician assistants to achieve M.S.
Polysomnography Technologist	Stony Brook University	Certificate, B.S. in Respiratory Care with Polysomnography Specialty

Profession	Educational Institution	Degree Program
Psychologist	Adelphi University	B.A. in Psychology, B.A./M.A. in Psychology, Ph.D. Clinical Psychology
	Empire State College	B.A. in Human Development
	Farmingdale State College	B.S. in Applied Psychology
	Hofstra University	B.A., M.A., Ph.D., Psy.D. in Psychology
	LIU Post	B.S. in Psychology, M.S. in Mental Health Counseling
	Molloy College	B.S. in Psychology
	New York Institute of Technology	B.S. in Psychology
	St. Joseph's College	B.A., B.S. in Psychology, B.A./M.B.A. Dual Degree in Industrial-Organizational Psychology
	Stony Brook University	B.A., B.S., M.S., Ph.D. in Psychology
Radiation Therapy Technologist/ Radiation Therapist	Nassau Community College	A.A.S.
Radiologic Technologist	Hunter Business School	Certificate
	LIU Post	B.S.
	Nassau Community College	A.A.S.
	Stony Brook University	Certificate
	Western Suffolk BOCES	Certificate
Recreational Therapist	St. Joseph's College	B.S., eligible for NCTRC certification exam
Registered Nurse	Adelphi University	B.S., R.N. to B.S., M.S. in Nursing Administration, Ph.D. in Nursing
	Farmingdale State College	Transition program for R.N. to B.S., B.S.
	LIU Post	B.S. in Nursing for RNs only
	Molloy College	B.S., B.S.N., M.S., Post-M.S. Certificate, Ph.D., DNP; L.P.N. to B.S.N., A.A.S. to B.S.N. and career change transition programs
	Nassau Community College	A.S.
	New York Institute of Technology	B.S.
	St. Joseph's College	B.S., M.S., transition programs for career changes, M.S. for Clinical Nurse Specialist
	Stony Brook University	B.S., M.S., transition programs for career changes, M.S. for Clinical Nurse Specialist
	Suffolk County Community College	A.S., L.P.N. to R.N. transition program
Rehabilitation Counselor	Adelphi University	M.A. Mental Health Counseling
	Hofstra University	M.S.Ed Rehab Counseling
Respiratory Therapist	Stony Brook University	B.S. in Respiratory Therapy
Respiratory Therapy Technician	Molloy College	A.S., B.S. in Respiratory Care
	Nassau Community College	A.A.S Respiratory Care
Security Officer	Eastern Suffolk BOCES	Certificate
	LI Educational Opportunity Center	Certificate

Profession	Educational Institution	Degree Program
Social Worker	Adelphi University	B.S.W., M.S.W. & Ph.D.
	Empire State College	B.S. Community and Human Services
	LIU Post	B.S., M.S.W.
	Molloy College	B.S.W., B.A./M.S.W. (joint program with Fordham)
	New York Institute of Technology	B.S.
	Stony Brook University	B.S.W., M.S.W., M.S.W./M.P.H. Dual Degree, M.S.W./J.D. Dual Degree (partnership with Touro Law School, Ph.D.
Speech-Language Pathologist	Adelphi University	B.S. in Communication Disorders, M.S. with Speech-Language Pathology Concentration, AuD, Ph.D. in Speech Language Sciences & Disorders
	Hofstra University	B.A./M.A. Speech-Language Pathology
	LIU Post	B.S./M.A.
	Molloy College	B.A., M.S. Speech-Language Pathology
	St. Joseph's College	B.A. in Speech
	Stony Brook University	M.S. Speech Language Pathology
Stationary/Watch Engineer	Branford Hall Institute	HVAC/R Certificate
	Eastern Suffolk BOCES	HVRAC/EPA Certificate
	Farmingdale State College	B.S. in Industrial Technology- Facility Management Technology
	Nassau BOCES	HVAC Certificate
	Suffolk County Community College	Certificate, A.A.S. in HVAC/R, A.S. in Engineering Science
Surgical Technologist	Nassau Community College	A.A.S.
	Western Suffolk BOCES	Certificate
Unit Clerk		High School Diploma



NASSAU-SUFFOLK HOSPITAL COUNCIL MEMBER INSTITUTIONS

GLEN COVE HOSPITAL

101 Saint Andrews Lane, Glen Cove, NY 11542
(516) 674-7300
<https://glencove.northwell.edu>

Known for outstanding scores in patient satisfaction along with a comprehensive service excellence program, Glen Cove Hospital is an acute care facility that provides excellent medical, surgical, and critical care. The hospital has a full-service emergency department and is a New York State certified stroke center. The hospital operates a short-stay clinical decision unit, a 10-bed acute care brain injury rehabilitation unit, a 55-bed inpatient rehabilitation unit and has an ambulatory surgery program. Outpatient rehabilitation services include: physical therapy, occupational therapy, speech therapy and pulmonary rehab. Glen Cove's Don Monti Cancer Center provides state-of-the-art, comprehensive outpatient care for a wide range of cancers and blood disorders. The hospital also has a highly successful family practice residency program, which has trained primary care physicians throughout the United States. Designated as a patient-centered medical home, Glen Cove's Family Medicine Ambulatory Center treats patients of all ages from infants to geriatric patients. The hospital also has a Specialized Treatment Services Unit for the care of patients with highly infectious diseases.

GOOD SAMARITAN HOSPITAL

1000 Montauk Highway, West Islip, NY 11975
(631) 376-4444
www.chsli.org/good-samaritan-hospital

Founded in 1959, Good Samaritan Hospital is a 537-bed facility, including 100 nursing home beds. Good Samaritan's dedicated staff is committed to providing the highest quality of health care services to its patients. It earned a three-year accreditation with commendation from the American College of Surgeons Commission on Cancer. Good Samaritan has also received recognition from the American College of Radiology, the American Diabetes Association, is a Breast Imaging Center of Excellence as designated by the American College of Radiology, a Bariatric Surgery Center of Excellence as designated by the American Society for Metabolic and Bariatric Surgery, and a Sleep Medicine Center of Excellence as designated by the American Academy of Sleep Medicine. Good Samaritan is a New York State Department of Health-designated Stroke Center and received the Get With The Guidelines® (GWTG) Stroke Gold Plus Performance Achievement Award and GWTG Heart Failure Gold Performance Achievement Award from the American Heart Association/American Stroke Association. It continues to be one of the few community hospitals selected by the New York State Department of Health to perform primary angioplasty on an elective

basis. The need for expert cardiology care has steadily increased in the community. In response, the St. Francis Hospital Open Heart Surgery Program at Good Samaritan has brought its award-winning surgical program to the area. Good Samaritan is a member of Catholic Health.

HUNTINGTON HOSPITAL

270 Park Avenue, Huntington, NY 11743
(631) 351-2000
<https://huntington.northwell.edu>

Huntington Hospital is a 408-bed, full-service, not-for-profit community hospital, serving Huntington Township and the surrounding communities since 1916. Services include cancer, cardiac, maternity, neonatal, pediatric emergency care, and specialized surgical procedures, including complex orthopaedic, brain, and bariatric surgery. It is the only hospital on Long Island, the second in the state, and one of only 33 in the country to achieve Magnet status four consecutive times by the American Nurses Credentialing Center in recognition of nursing excellence. Huntington Hospital has been designated by the New York State Department of Health as a Stroke Center. The Dolan Family Health Center is Long Island's only free-standing, charitably supported, hospital-owned healthcare center for patients and community members without health insurance. Huntington Hospital is a member of the Northwell Health System.

MATHER HOSPITAL

75 North Country Road, Port Jefferson, NY 11777
(631) 473-1320
www.matherhospital.org

Mather Hospital opened its doors in 1929 with 54 beds, as the first not-for-profit community hospital in the Town of Brookhaven. Today, Mather Hospital is an accredited 248-bed, non-profit community hospital dedicated to providing a wide spectrum of health care services of the highest quality, in a cost-effective manner, to the residents of Suffolk County. It is known for its commitment to providing compassionate and respectful care to each and every patient. Mather earned the prestigious Magnet® recognition from the American Nurses Credentialing Center, which recognizes quality patient care and nursing excellence. Only 475 hospitals worldwide have received this recognition. Signature services include the Fortunato Breast Health Center, Bariatric Center of Excellence, Precision CyberKnife of NY, Weiss Center for Pain Management, wound treatment center, chest pain emergency room, adolescent and adult inpatient psychiatric units, psychiatric partial hospitalization programs, hyperbaric oxygen therapy unit, and a sleep disorders center. In December 2017, Mather Hospital joined Northwell Health System.

LONG ISLAND COMMUNITY HOSPITAL

101 Hospital Road, Patchogue, NY 11772

(631) 654-7100

www.licommunityhospital.org

Long Island Community Hospital is a 306-bed community hospital, serving the needs of 28 towns and villages throughout Suffolk County. Located in East Patchogue, Long Island Community Hospital provides leading edge health care solutions through a focused and compassionate team in technologically advanced facilities, including a certified Level II Trauma Center, cardiac catheterization laboratory, and a New York State Department of Health-designated Stroke Center that received the Get With The Guidelines® (GWTG) Stroke Gold-Plus Performance Achievement Award. The Knapp Cardiac Care Center provides a full range of high-quality cardiac diagnosis, treatment, and rehabilitation through an affiliation with the NYU Langone Hospital Long Island cardiac team. The hospital is comprised of the main campus and the Swezey Medical Pavilion in downtown Patchogue, which accommodates the outpatient hemodialysis program, home care and hospice services. Other off-site ambulatory services include: Bellport Primary Care Center, outpatient imaging, a women's imaging center, two Centers of Excellence for Wound Care and Hyperbaric Medicine located in Patchogue and Hauppauge, a sleep center, and a family medicine center. Our affiliated services include Long Island Orthopaedic and Spine Specialists, a Breast Imaging Center of Excellence as designated by the American College of Radiology, and a Bariatric Surgery Center of Excellence as designated by the American Society for Metabolic and Bariatric Surgery. Long Island Community Hospital also trains the doctors of tomorrow through its Graduate Medical Education Program. The hospital is dedicated to delivering accessible, high-quality health services in a focused caring and teaching environment, while providing health advocacy for the community and people it serves.

LONG ISLAND JEWISH VALLEY STREAM HOSPITAL

900 Franklin Avenue, Valley Stream, NY 11571

(516) 256-6000

www.valleystream.northwell.edu

Long Island Jewish Valley Stream Hospital is a 305-bed community hospital that offers a comprehensive array of programs and services to patients from Nassau County to southeastern Queens. A member of Northwell Health System, the hospital has one of the most advanced emergency departments in the region. The hospital is home to a state-of-the-art 120-bed facility known as North Shore-LIJ Orzac Center for Rehabilitation. This facility houses the hospital's long-term care and rehabilitative medicine departments and the medically-oriented Adult Day Health Care Program.

MERCY HOSPITAL

1000 North Village Avenue, Rockville Centre, NY 11571

(516) 705-2525

www.chsli.org/mercy-hospital

A member of Catholic Health (CH), Mercy Hospital in Rockville Centre is a 375-bed community hospital that has been providing compassionate, state-of-the-art health care to residents of Nassau County and the surrounding New York metropolitan area for more than a century. Mercy is a Breast Imaging Center of Excellence as designated by the American College of Radiology, and its Bariatric Surgery Program is fully accredited by the Metabolic and Bariatric Surgery Accreditation and Quality Improvement Program. Mercy is also a New York State Department of Health designated Stroke Center and the recipient of a Get With The Guidelines® Stroke Gold Plus Quality Achievement Award from the American Heart Association/American Stroke Association. In addition, Mercy earned the Outstanding Achievement Award from the Commission on Cancer of the American College of Surgeons and the Pathway to Excellence® designation from the American Nurses Credentialing Center. Founded by the Sisters of the Congregation of the Infant Jesus, Mercy is proud to advance the CHS principles of continuing Christ's healing mission and promoting excellence in care, with a commitment to those in need.

NASSAU UNIVERSITY MEDICAL CENTER

2201 Hempstead Turnpike, East Meadow, NY 11554

(516) 572-0123

www.numc.edu or www.nuhealth.net

The NuHealth System (also known as the Nassau Health Care Corporation), is comprised of Nassau University Medical Center, the A. Holly Patterson Extended Care Facility in Uniondale, and five community health centers, co-operated with the Long Island Federally Qualified Health Center, Inc. It provides critical health services to all residents of Nassau County, but particularly to those vulnerable populations who are most in need. One of only four Level I Trauma Centers on Long Island, Nassau University Medical Center, a 530-bed tertiary care teaching hospital, is part of a 1,200-bed health care system. Annually, the safety net hospital treats over 72,000 people in its emergency rooms and another 270,000 people receive care in over 80 specialties. Some of its outstanding, highly specialized services include a newly remodeled emergency department, a self-contained new burn center, the region's largest hyperbaric chamber, breast imaging center, eye center, dentistry and oral surgery center, AIDS center, cardiac catheterization lab, MRI facility, a newly renovated physical medicine and rehabilitation unit, new labor and delivery suites, neonatal intensive care unit, and a department of orthopedics specializing in minimally invasive surgery. Founded in 1935, NUMC serves as a major teaching campus of the Health Science Center of the State University of New York at Stony Brook and the American University of the Caribbean and is affiliated with the Northwell Health System. With a staff of over 3,500, the NuHealth System serves as a center for

teaching and learning and encourages research and innovation, continually striving to improve patient care. As one of Long Island's top Level I Trauma Centers, with a helipad, NUMC treats over half of all serious traumas in Nassau County in five separate emergency rooms: medical emergencies, surgical emergencies, pediatric emergencies, a gynecology suite, and an emergency ambulatory unit.

NORTH SHORE UNIVERSITY HOSPITAL

300 Community Drive, Manhasset, NY 11030
(516) 562-0100
<https://nauh.northwell.edu>

North Shore University Hospital is one of the cornerstones of the Northwell Health System, providing the full spectrum of clinical health care services for patients of all ages. It offers a wide range of specialty and subspecialty residency programs, postgraduate training programs, and clinical fellowships for research and education. The hospital has 806 beds on the 58-acre Sandra Atlas Bass Campus. It is academically affiliated with the Hofstra Northwell School of Medicine and employs more than 6,000 highly trained physicians, nurses and other medical staff. North Shore University Hospital provides leading edge care in all medical specialties, including open-heart surgery, neurosurgery, orthopedic surgery, urology, and maternal-fetal medicine. It continues to meet the needs of the community through exceptional primary health care while offering specialty programs such as the Katz Women's Hospitals (one of two), for comprehensive, compassionate, and superior care for women's health issues. North Shore University Hospital also includes the Comprehensive Wound Healing Center, focused on chronic wound care, the first and only kidney transplant center in Nassau and Queens counties, and the Center for Human Reproduction. The emergency department at North Shore University Hospital is a New York State-designated Regional Level I Trauma Center. It offers the highest level of care to the most critically injured patients in the area. The physicians and nurses of the ED care for more than 90,000 patients per year and are available 24 hours a day, 7 days a week.

NYU LANGONE HOSPITAL LONG ISLAND

259 First Street, Mineola, NY 11501
(516) 663-0333
www.nyulangone.org/locations/nyu-langone-hospital-long-island

A 591-bed university-affiliated teaching hospital and clinical campus, NYU Langone Hospital Long Island offers a full complement of inpatient and outpatient services delivered by an outstanding medical staff using the most sophisticated medical technology available. The hospital, which boasts a five-story, 95,000 square-foot Research & Academic Center, boasts robust and extensive medical education and research programs. A major regional healthcare resource, NYU Langone Hospital Long Island has earned many prestigious accreditations, including designations as a New York State Department of Health Stroke Center, New York State Regional Perinatal Center and Regional Trauma Center, and is known across the state for its excellent outcomes in interventional

cardiology and cardiac surgery. In addition to outstanding heart care, NYU Langone Hospital Long Island offers outstanding services in cancer care, digestive disorders, women's and children's health services, men's health, lung care and neurosciences, and is home to the New York metro area's first and most experienced CyberKnife Radiosurgery Center. The hospital's mission is based on a profound commitment to an enduring guiding principle: "Your Health Means Everything."

PECONIC BAY MEDICAL CENTER

1300 Roanoke Avenue, Riverhead, NY 11901
(631) 548-6000
www.pbmchealth.org

Established in 1951 as Central Suffolk Hospital, Peconic Bay Medical Center (PBMC) is a 200-bed not-for-profit community health care organization providing a variety of services and programs from advanced surgical care and comprehensive inpatient medical care to a skilled nursing and rehabilitation center which received a 5-Star Rating from U.S. News & World Report. PBMC offers an extensive range of outpatient services, including Peconic Bay Physical Therapy and Rehabilitation Center and Peconic Bay Home Health Services, a certified home health agency. As an academic institution, offering the highest standards of graduate medical education, PBMC has expanded its medical residency program to include general surgery and family medicine. Peconic Bay Medical Center is a New York State Department of Health designated Stroke Center. The Richard Rubenstein, MD Center for Bariatric Surgery has received the "Center of Excellence" designation from the American Society of Bariatric Surgery. PBMC has earned the Joint Commission's Gold Seal of Approval for total joint replacement for hip and knee. In April 2015, Peconic Bay Medical Center joined Northwell Health System, further strengthening its ability to bring more clinical services and a broader network of providers into central and eastern Suffolk County.

PLAINVIEW HOSPITAL

888 Old Country Road, Plainview, NY 11803
(516) 719-3000
<https://plainview.northwell.edu>

Plainview Hospital is an acute care community hospital with 219 beds that treats patients with a wide range of medical, surgical, and gynecological conditions. It has a same-day surgery program and is also the site of one of the Don Monti Cancer Centers. The emergency department at Plainview is staffed by a team of dedicated board-certified emergency medicine physicians and certified emergency nurses and technicians 24 hours a day, seven days a week, and offers expanded treatment areas and a fast track unit. It is also a New York State Department of Health Primary Stroke Center and a recipient of the American Heart Association/American Stroke Association's Get With the Guidelines® — Stroke Quality Achievement Award. Another renowned service at Plainview is the total joint replacement program of the hospital's orthopedics department, which offers a holistic approach to healing,

beginning with the preoperative total joint replacement class. Patients learn how to prepare for surgery, what to expect during their hospital stay and how to plan for care after they leave. In 2011, Plainview received the Blue Distinction Center for hip and knee replacement from the BlueCross BlueShield Association. The hospital was recently recognized by the Joint Commission for achieving excellence in performance on its accountability measures for heart attack, heart failure, pneumonia, and surgical care. Plainview is one of only 405 hospitals in the United States to earn this distinction, which represents the top 14 percent of Joint Commission-accredited hospitals.

SOUTH SHORE UNIVERSITY HOSPITAL

301 East Main Street, Bay Shore, NY 11706

(631) 968-3000

<https://ssuh.northwell.edu>

South Shore University Hospital is a 341-bed tertiary hospital that offers centers of excellence in cardiology, orthopedics, neurosciences, and women's health services. Southside is proud to offer the Northwell Health System's award-winning cardiac surgery program. The state-of-the-art hybrid operating room combines interventional, imaging, and surgical services and the cardiothoracic surgical team offers valve and valve/coronary artery bypass surgery close to home for Suffolk County residents. South Shore University provides high-quality care in women's health. It recently became one of the first in the world to be designated as a Center of Excellence in Minimally Invasive Gynecology (COEMIG). South Shore also offers quality outpatient care in emergency medicine, radiation oncology, wound healing, pain management, and outpatient imaging. A New York State-designated stroke center and a Level II trauma center, South Shore is also well-known for its extensive physical medicine and rehabilitation programs. South Shore houses the Regional Center for Brain Injury Rehabilitation, the only New York State-designated hospital-based adult brain injury unit on Long Island and the Gulden Radiation Oncology Center. Southside Hospital is a member of the Northwell Health System.

MOUNT SINAI SOUTH NASSAU HOSPITAL

One Healthy Way, Oceanside, NY 11572

(516) 632-3000

www.southnassau.org

Designated a Magnet® hospital by the American Nurses Credentialing Center (ANCC), Mount Sinai South Nassau Hospital is one of the region's largest hospitals, with 455 beds, more than 900 physicians, and 3,000 employees. Located in Oceanside, NY, the hospital is an acute-care, not-for-profit teaching hospital that provides state-of-the-art care in cardiac, oncologic, orthopedic, bariatric, pain management, mental health, and emergency services. In addition to its extensive outpatient specialty

centers, South Nassau provides emergency and elective angioplasty, and is the only hospital on Long Island with the Novalis Tx™ and Gamma Knife® radiosurgery technologies. South Nassau is a designated Stroke Center by the New York State Department of Health and Comprehensive Community Cancer Center by the American College of Surgeons. It is an accredited Metabolic and Bariatric Surgery Center by the Metabolic and Bariatric Surgery Association. In addition, the hospital has been awarded the Joint Commission's gold seal of approval as a Top Performer on Key Quality Measures; including heart attack, heart failure, pneumonia, and surgical care; and disease-specific care for hip and joint replacement, wound care, and end-stage renal disease.

ST. CATHERINE OF SIENA HOSPITAL

50 Route 25A, Smithtown, NY 11787

(631) 870-3444

<https://stcatherines.chsli.org>

St. Catherine of Siena is a 296-bed, not-for-profit, community-based hospital offering superior care in areas such as bariatrics, breast health, elective and emergency angioplasty, palliative care, and psychiatric services. Its state-of-the-art Sleep Disorders Center provides evaluation, testing, and diagnostic services for adults and children. Known for its obstetrics services, St. Catherine offers a Level II Neonatal Intensive Care Unit for the youngest of patients in a newly renovated unit providing a homelike environment for optimal family bonding. The hospital is also an award-winning, New York State Department of Health-designated Stroke Center, credentialed by The Joint Commission, and is designated a Mentor Hospital for Best Practice in decreasing central line infections. The medical center's campus includes a 240-bed nursing home and a medical office building. St. Catherine of Siena Hospital is a member of Catholic Health.

ST. CHARLES HOSPITAL

200 Belle Terre Road, Port Jefferson, NY 11777

(631) 474-6000

<https://stcharleshospital.chsli.org>

St. Charles is a 243-bed, not-for-profit hospital with centers of excellence in orthopedics, obstetrics, and rehabilitation. In addition, St. Charles offers services in pediatrics, including Long Island's only pediatric inpatient traumatic brain injury unit, neonatology, radiology, neurosurgery, emergency medicine, diabetes education, community re-entry, general medical and surgical services, video-EEG monitoring, medically supervised detoxification for adolescents and adults, a nationally certified Sleep Disorders Center and a Primary Stroke Center certified by the Joint Commission. St. Charles Hospital is a member of Catholic Health.

ST. FRANCIS HOSPITAL & HEART CENTER

100 Port Washington Blvd., Roslyn, NY 11576
(888) HeartNY
<https://stfrancisheartcenter.chsli.org>

St. Francis Hospital & Heart Center, is New York State's only specialty designated cardiac center and a nationally recognized leader in the diagnosis, treatment, and prevention of heart disease. St. Francis is consistently ranked one of the best hospitals in America by U.S. News & World Report and has earned the prestigious Magnet designation for nursing excellence three times. More cardiac surgery is performed at St. Francis than at any other hospital in New York State, and St. Francis has been recognized by the New York State Department of Health for its outstanding success rates more times than any other hospital in the New York metropolitan area. A leader in cardiovascular care for over 50 years, St. Francis Hospital also offers an outstanding program in vascular, prostate, ear-nose-throat (ENT), abdominal, oncologic, gastrointestinal, and orthopedic surgery. The DeMatteis Center for Cardiac Research and Education hosts a team of world-renowned investigators working with non-invasive imaging technology, including a new multidetector CT scanner, 3-dimensional echocardiography system, PET/CT scanner, and the area's first dedicated cardiac MRI unit, to improve methods of diagnosing heart disease. St. Francis is a member of Catholic Health.

ST. JOSEPH HOSPITAL

4295 Hempstead Turnpike, Bethpage, NY 11714
(516) 520-2500
www.chsli.org/st-joseph-hospital

St. Joseph Hospital, located in Bethpage, is a 203-bed hospital offering magnetic resonance imaging (MRI), nuclear medicine, and a vascular laboratory in its array of fully digital radiological services. St. Joseph was awarded The Joint Commission Gold Seal of Approval®, signifying full accreditation by the nation's predominant standards setting body in health care. St. Joseph offers many specialized services, including high-level skin grafting and vascular assessment, and adult and pediatric speech, voice, and swallowing therapy. St. Joseph provides residents of the surrounding communities the expertise of its nationally accredited outpatient Diabetes Education Center, balance testing for vestibular disorders and outpatient physical therapy (with additional specialization in balance disorders). Outpatient services also include sleep disorder studies in the nationally accredited Center for Sleep Medicine and hyperbaric oxygen therapy in the first wound healing center on Long Island to be accredited—and reaccredited—by the Undersea and Hyperbaric Medical Society. The hospital is a New York State Department of Health-designated Stroke Center. St. Joseph Hospital is a member of Catholic Health.

STONY BROOK EASTERN LONG ISLAND HOSPITAL

201 Manor Place, Greenport, NY 11944
(631) 477-1000
www.elih.stonybrookmedicine.edu

Committed to delivering excellence in patient care since 1905, Stony Brook Eastern Long Island Hospital (ELIH) is Suffolk County's first voluntary hospital. SBELIH is a 90-bed community hospital with a strong history of neighbors caring for neighbors. SBELIH is located on the North Fork of Long Island in a seaside community. Patient services encompass medical/surgical care, critical care, emergency medicine, pediatric emergency medicine, pain management, and behavioral health services, including psychiatry, detox, addiction rehabilitation, and outpatient therapies. Every staff member takes great pride in delivering that extra measure of caring and is dedicated to "putting CARE back in Health CARE." With over ten decades of experience, SBELIH has emerged into a national leader for quality care and patient safety with a five-star rating for patient satisfaction.

STONY BROOK SOUTHAMPTON HOSPITAL

240 Meeting House Lane, Stony Brook, NY 11968
(631) 726-8200
<https://southampton.stonybrookmedicine.edu/>

Founded in 1909, Southampton Hospital is staffed by more than 280 physicians, dentists, and allied health professionals representing 48 medical specialties. Accredited by the Joint Commission, and affiliated with Stony Brook Medicine, Southampton Hospital offers a diverse array of clinical services ranging from primary medical care to specialized surgical procedures. A New York State-designated Stroke Center, Southampton Hospital is the sole provider of emergency care on Long Island's South Fork. The hospital's Ellen Hermanson Breast Center offers comprehensive diagnostic imaging, surgery, and support. Its state-of-the-art maternity center offers private and labor/delivery rooms, and a dedicated operating suite. The Center for Advanced Wound Healing provides hyperbaric oxygen therapy and other state-of-the-art healing methods. The new Audrey and Martin Gruss Heart & Stroke Center provides sophisticated diagnostics and interventional treatment of stroke and vascular disease. In addition to in-hospital services, 24 satellite care centers throughout South Fork provide services in primary and specialty care, radiology, laboratory, sports and physical therapy, dialysis, cardio-pulmonary rehabilitation, wellness, and HIV/AIDS care. In conjunction with Stony Brook Medicine, the Hospital's graduate medical education program in family medicine and general surgery is training physicians to serve in communities across Eastern Long Island.

STONY BROOK UNIVERSITY HOSPITAL

101 Nicolls Road and Health Sciences Drive, Stony Brook, NY 11794
(631) 444-4000
www.stonybrookmedicine.edu

Stony Brook University Hospital (SBUH) is Long Island's premier academic medical center. With 603 beds, SBUH serves as the region's only tertiary care center and Level 1 Trauma Center and is home to the Stony Brook University Heart Institute, Stony Brook University Cancer Center, Stony Brook Children's Hospital, Stony Brook University Neurosciences Institute, and Stony Brook University Digestive Disorders Institute. SBUH also encompasses Suffolk County's only Level 4 Regional Perinatal Center, state-designated AIDS center, state-designated Comprehensive Psychiatric Emergency Program, state-designated burn center, the Christopher Pendergast ALS Center of Excellence, and kidney transplant center. It is home of the nation's first pediatric multiple sclerosis center.

SYOSSET HOSPITAL

221 Jericho Turnpike, Syosset, NY 11791
(516) 496-6400
<https://syosset.northwell.edu>

Syosset Hospital provides medical care and advanced technical services performed by skilled, compassionate professionals and support staff trained and certified in the latest medical procedures. It also has a strong commitment to community health. Its 136 beds include a well-equipped special care unit and a psychiatric wing. The emergency department treats more than 15,000 patients each year and has a trauma unit and eight treatment beds. The radiology department has the most advanced high-speed CAT scan technology available. The Abdullah Mishrick, MD Surgical Suite performs advanced laparoscopic and general surgery procedures. In addition, Syosset is home to the Center of Excellence for Bariatric Surgery and the Centers of Excellence for Orthopedics. Syosset Hospital is a member of the Northwell Health System.



Nassau-Suffolk Hospital Council

ABOUT THE NASSAU-SUFFOLK HOSPITAL COUNCIL

The Nassau-Suffolk Hospital Council (NSHC) is the advocacy organization representing the interests of all Long Island hospitals to lawmakers, regulatory agencies, and the media. Its activities also include educating hospital staff, working with allied health and community organizations, and representing hospitals in the business community. The association is committed to ensuring that affordable, quality care is accessible to all, and that a well-prepared workforce is ready to meet the health care needs of Long Island's patients.