

# A Career in **HEALTHCARE**



Nassau-Suffolk  
Hospital Council

2025 Guide



# Table of Contents

## **Health Care Occupations and Professions by Category**

|   |   |
|---|---|
| Administrative and Information Services | 1 |
| Behavioral Health Services              | 1 |
| Facilities Management                   | 2 |
| Laboratory and Technical Services       | 2 |
| Nursing and Patient Care                | 4 |
| Nutrition                               | 5 |
| Radiology                               | 5 |
| Therapy Services                        | 6 |

|                                  |    |
|----------------------------------|----|
| <b>Sample of Median Salaries</b> | 12 |
| Bureau of Labor Statistics Data  |    |

|  |    |
|--|----|
| <b>Health Occupation Education Programs in Nassau/Suffolk Counties</b> | 13 |
| By Profession  |    |

|  |    |
|--|----|
| <b>Nassau-Suffolk Hospital Council Member Institutions</b> | 21 |
| In Alphabetical Order                                      |    |



# A Career in **HEALTH CARE**

Health care is an exciting and dynamic field. Often when deciding what career path to follow, people identify various goals they hope to achieve. They want good salaries, opportunities for advancement, and challenging and interesting work experiences. You can fulfill these goals with a career in health care, but you can add to those features an important ingredient: the good feeling you get from helping others.

Yes, careers in health care are careers that count! Be part of a team that brings hope and comfort to the sick and elderly. Teach the disabled to recapture their independence. Help identify and manage various medical conditions. Be part of the information technology (IT) and administrative infrastructure that makes up the backbone of health care institutions. These are just a few examples of how rewarding it is to be part of the health care team. Allied health includes fields such as nursing, physical therapy, occupational therapy, pharmacy, medical laboratory technology, respiratory therapy, nutrition, radiologic technology, and more. These careers pay well, are in demand throughout the country, and offer flexible hours in stimulating environments.

Demand for health professionals is expected to grow more than twice as fast as the rest of the labor force in the coming decades. So when you are considering where your future will take you, consider health care. Become one of the team that makes a difference in people's lives — it'll make a difference in your life too!



## HEALTH CARE OCCUPATIONS/PROFESSIONS BY CATEGORY

### ADMINISTRATIVE AND INFORMATION SERVICES

**PATIENT ACCESS REPRESENTATIVES** interview patients, verify financial data, and prepare initial patient information and medical records required to admit patients to the hospital.

**APPLICATIONS ANALYSTS** maintain and support various computer applications and assist with the installation of clinical information systems. Responsibilities include troubleshooting computer and systems problems, coordinating and/or performing software upgrades, and providing technical support.

**CLINICAL INFORMATICISTS** develop and maintain the software applications and databases that are utilized by physicians, nurses, and other clinicians. Other responsibilities may include designing and implementing educational programs to assist in the adoption of new medical software, training new employees, and recommending system changes to assist clinical users.

#### COMPUTER SUPPORT/HELP DESK

**SPECIALISTS** perform routine tasks to maintain computer equipment and provide technical assistance to end-users. Knowledge of computer and software programs is preferred.

**HEALTH INFORMATION MANAGEMENT (HIM) ACCESS REPRESENTATIVES** design, implement, manage, and evaluate information systems and electronic health records. Health information managers incorporate the disciplines of medicine, management, finance, information technology, and regulatory requirements.

**MEDICAL CODERS** manage and secure health information by ensuring its accuracy and completeness in paper and electronic forms. They translate clinical data into standardized diagnostic and procedural codes used for insurance reimbursement, hospital reports, and identifying public health trends.

**UNIT SECRETARIES** work in inpatient or outpatient units, facilitating communication and providing information to staff and visitors. They process physicians' orders, handle admissions, maintain patient charts and logs, and perform clerical tasks. They may also make emergency calls and transport supplies or records as needed.

**PUBLIC HEALTH EDUCATORS** are proficient in behavior change theories and models that equip patients with the skills, knowledge, and information they need to make lifestyle changes that lead to lifelong wellness. These specialists are aware of the influence social determinants of health have upon patients' lives and incorporate that knowledge into interventions tailored to patient needs. They are required to have excellent communication skills, know how to navigate the complex healthcare system, possess a working knowledge of clinical aspects of health, and utilize data to make decisions and inform interventions and assistance.

### BEHAVIORAL HEALTH SERVICES

**CERTIFIED BEHAVIOR ANALYSTS AND LICENSED BEHAVIOR ANALYST ASSISTANTS** work with patients (primarily those with autism and autism spectrum disorders) to implement and evaluate environmental modifications, using behavioral stimuli and consequences to produce socially significant improvements in behavior. Licensed behavior analysts design, implement, and evaluate environmental modifications. Certified behavior analyst assistants provide services and activities under the supervision of a licensed behavior analyst.

**BEHAVIORAL HEALTH TECHNICIANS AND BEHAVIORAL HEALTH THERAPY AIDES** support emotionally or mentally challenged individuals in psychiatric hospitals or clinics. Working with interdisciplinary teams, they assist patients with grooming, daily living, and therapeutic care. Responsibilities include implementing treatment plans, recordkeeping, administering medication, and conducting therapy sessions.

**MENTAL HEALTH COUNSELORS** provide counseling and psychotherapy for individuals with mental, emotional, or behavioral disorders. They assess patients, develop treatment plans, document progress, and coordinate with other providers. Counselors work individually or in teams, addressing short- and long-term needs in various settings. For severe cases, they collaborate with physicians for medical care.

**PSYCHOLOGISTS** study the human mind and human behavior by observing, interpreting, and recording people's interaction with others. Psychologists in health service fields provide mental health care in hospitals, clinics, schools, or private settings, but may also work in research or applied settings, such as business, industry, government, or nonprofit organizations. A doctoral degree is usually required for independent practice as a psychologist. Psychologists with a Ph.D. or Doctor of Psychology (Psy.D.) qualify for a wide range of teaching, research, clinical, and counseling positions.

**REHABILITATION COUNSELORS** assist people with physically, mentally, emotionally, or socially handicapping conditions to become or remain self-sufficient, productive citizens. Rehabilitation counselors help individuals with disabilities deal with societal and personal problems, plan careers, and find and keep satisfying jobs. A rehabilitation counselor builds bridges between the often isolated world of people with disabilities and their families, communities, and work environment.

**SOCIAL WORKERS** work with individuals, groups, and communities in a medical setting to address problems related to physical, emotional, and mental illnesses or disabilities; LMSW (Master's + certification), LCSW (Master's + residency + licensure) and Social Workers (BA, working under supervision).

## **FACILITIES MANAGEMENT**

**MAINTENANCE MECHANICS** diagnose, repair, and replace mechanical and electrical equipment as necessary. Candidates must be proficient in the tools, instruments, and equipment necessary for maintenance and repair of electrical, mechanical, and utility systems and have a

working knowledge of motors, boilers, compressors, control valves, HVAC, and other systems.

**SECURITY OFFICERS** (unarmed) perform security tasks to guard hospital property against fire, theft, vandalism, and illegal entry. They promote the safety of visitors and staff. These positions require a New York State security license.

**STATIONARY/WATCH ENGINEERS** diagnose, repair, and replace equipment and components. They perform daily chemical analysis of hospitals' boilers and chillers and make necessary adjustments. This position supports the power plant and HVAC engineers.

## **LABORATORY AND TECHNICAL SERVICES**

**BIOMEDICAL ENGINEERS** may work in manufacturing, universities, health care facilities, the research departments of companies, or regulatory agencies. Biomedical engineers analyze and design solutions to problems in biology and medicine, with the goal of improving the quality and effectiveness of patient care. Potential tasks include designing systems and products, such as artificial devices that replace body parts, designing machines that diagnose medical problems, or training health care personnel on how to operate biomedical equipment.

**BIOMEDICAL TECHNICIANS** provide performance testing, repair, calibration, and safety testing of medical electronics/electromechanical equipment. It is the biomedical tech's responsibility to ensure each instrument is functioning according to the manufacturer's specifications, in addition to regulatory agency codes and standards. There are two areas of work for biomedical technicians: in-house technicians and field technicians. In-house technicians work in hospitals and for manufacturers, while field technicians work for manufacturers and third-party service providers at the customer site.

**CARDIOVASCULAR TECHNOLOGISTS** assist physicians in diagnosing and treating heart and blood vessel conditions using imaging technology. They perform procedures, monitor heart rates, maintain equipment, and analyze results. Specialties include invasive cardiology, echocardiography, and vascular technology.

**CENTRAL STERILE TECHNICIANS** provide the services of decontamination, preparation, packaging, sterilization, and storage and distribution of reusable medical instrumentation or devices in hospitals and ambulatory surgery centers.

**CLINICAL LABORATORY TECHNOLOGISTS AND CLINICAL LABORATORY TECHNICIANS** perform tests to determine the absence, presence or extent of disease. They are trained in all areas of lab testing including chemistry, hematology, blood banking, and microbiology. Clinical laboratory technologists supervise technicians and assistants and perform complex tests which often require independent judgment. Clinical laboratory technicians, under limited supervision, carry out less complicated tests.

**CYTOTECHNOLOGISTS** evaluate cell samples that have been shed normally, scraped from the body, or aspirated with a fine needle, for evidence of disease, such as cancer. Cytotechnologists are trained to notice subtle changes in cells so they can accurately identify precancerous, malignant, and infectious conditions.

**DIALYSIS TECHNICIANS**, under general supervision, set up and operate hemodialysis units and related equipment to provide dialysis treatment for patients with kidney disorders or failure.

**ELECTROENCEPHALOGRAPHIC (EEG) TECHNICIANS AND TECHNOLOGISTS** operate the EEG machine, which records electrical brain activity and helps to diagnose brain disorders such as strokes and tumors. In addition to performing the electroencephalogram test, EEG technologists explain the testing procedure to the patient and obtain important background information from the patient. They then apply the electrodes to the patient's scalp, record the EEG, and prepare the EEG record for the doctor's review.

**EKG TECHNICIANS** perform electrocardiograms (EKGs), and other routine, non-invasive cardiac procedures to measure and monitor cardiac activity. The EKG technician maintains department equipment and prepares reports for physician review.

**HISTOLOGIC TECHNICIANS** prepare anatomic tissues (surgically removed or from a biopsy) for microscopic examination by pathologists. Most

histologic technicians work in the pathology laboratory of a hospital or clinic. Others may work in medical research or independent laboratories. Histologic technicians work under supervision.

**INVASIVE CARDIOLOGY TECHNOLOGISTS** specialize in invasive procedures. They assist physicians with cardiac catheterization procedures in which a small tube, or catheter, is threaded through a patient's artery. Technologists prepare patients for cardiac catheterization and, during the procedures, they monitor patients' blood pressure and heart rate with EKG equipment. Technologists may also prepare and monitor patients during open-heart surgery and during the insertion of pacemakers and stents that open up blockages in arteries to the heart and major blood vessels.

**PERFUSIONISTS** are members of the hospital surgical team with the primary responsibility of operating the heart and lung machines during open heart surgeries or respiratory failures.

**PHLEBOTOMIST/PHLEBOTOMY TECHNICIANS** draw blood from patients and donors in hospitals, blood banks, or similar facilities and prepare specimens for screening, analysis, or other medical purposes. They perform screening tests and report results.

**POLYSOMNOGRAPHY TECHNOLOGISTS** perform sleep studies (polysomnography) to diagnose and assist in treating sleep disorders. These studies record physiological activities during sleep, including breathing, blood oxygen levels, brain activity (EEG), heart activity (ECG), eye movements, and muscle activity. They provide data and recommendations to sleep medicine physicians for appropriate patient treatment.

**SURGICAL TECHNOLOGISTS** are part of the operating room team that set up the surgical instruments and supplies for a patient's procedure. They assist in preparing patients for surgery and hand surgical instruments to the surgeon during an operation.

**TELEMETRY TECHNICIANS**, check the heart rhythm patterns of patients to detect abnormal pattern variations. They usually work in the intensive care or cardiac care units of hospitals. These technicians are responsible for reviewing

patients' records to determine normal heart rhythms. They monitor current patterns and note any deviations, and notify nurses and doctors when medical attention is needed.

## **NURSING AND PATIENT CARE**

**CERTIFIED NURSE ANESTHETIST** Administer anesthesia, monitor patient's vital signs, and oversee patient recovery from anesthesia in a variety of clinical settings. CRNAs may assist anesthesiologists, surgeons, other physicians, or dentists.

**CLINICAL NURSE SPECIALIST** is an RN who has completed advanced clinical nursing education (usually a master's degree) and is certified by New York State as a clinical nurse specialist. New York certifies clinical nurse specialists in the following specialties: Adult Health, Pediatrics, Oncology, and Psychiatry/Mental Health.

**DENTAL HYGIENISTS AND DENTAL ASSISTANTS** are part of the oral health care team. Dental hygienists typically perform cleanings and apply preventative treatments. Certified dental assistants perform functions such as taking patient histories, making impressions for dental casts, taking x-rays, and educating patients about oral health.

**EMERGENCY MEDICAL TECHNICIANS (EMT) AND PARAMEDICS (EMT-P)** complete state certification programs to respond to medical emergencies, providing critical care to the ill or injured. EMTs offer basic care like CPR and transport, while paramedics deliver advanced services per county and state guidelines. Care includes treating shock, burns, poisoning, and transporting patients to hospitals. Training is available through hospitals, colleges, firehouses, or police departments.

**HOME HEALTH AIDES** provide services to homebound or disabled individuals and their families under the supervision of home care or social service agencies. Aides provide basic patient care under direct nursing supervision. They may bathe and feed patients, change linens and make beds.

**LICENSED PRACTICAL NURSES (LPNS)** provide basic nursing care under the supervision of

registered nurses or physicians. They give routine bedside nursing care to patients and assist registered nurses with patients who are more seriously ill. Work settings include hospitals, nursing homes, extended care facilities, physician offices, and private homes.

## **MEDICAL ASSISTANTS, PATIENT CARE TECHNICIANS AND PATIENT CARE AIDES**

handle administrative and clinical tasks in healthcare settings. Medical assistants work in non-acute facilities, managing records, insurance forms, and scheduling, while also taking vitals, preparing patients, and assisting physicians. Patient care technicians and aides, often in acute care settings, provide similar services and frequently perform phlebotomy. Duties vary based on practice size, location, and specialty.

**NURSE'S AIDES** assist nursing staff by performing various routine patient care activities such as bathing, feeding, and moving patients.

**NURSE MIDWIVES** are health care providers who may care for the health needs of preadolescent, adolescent, and adult women throughout their life span. Licensed midwives provide primary well woman health care including: gynecologic care, and care during pregnancy and childbirth, as well as care of the newborn following birth.

**NURSE PRACTITIONERS** are advanced practice registered nurses who provide a wide range of healthcare services in settings like family practice offices, urgent care, and hospitals. They treat acute and chronic conditions, conduct exams, prescribe medications and therapies, and order tests within their scope of practice. NPs can serve as primary care providers and treat patients of all ages. They complete advanced education (usually a master's degree) and training in diagnosing and managing medical conditions.

**PHARMACISTS** are experts in the science of drugs and the art of drug therapy. They dispense drugs prescribed by physicians and other health practitioners and educate and inform consumers and patients about the use and possible effects of medication. Pharmacists also advise physicians and other health practitioners on the selection, dosages, interactions, and effects of medications. To become a licensed pharmacist,

candidates must graduate with a doctor of pharmacy (PharmD) degree from an accredited college of pharmacy, serve an internship under a licensed pharmacist, and pass a state examination (NAPLEX).

**PHARMACY TECHNICIANS** assist licensed pharmacists in providing medication and other health care products to patients. Technicians usually perform routine tasks to help prepare prescribed medication, such as counting tablets and labeling bottles. They also perform administrative duties, such as answering phones, stocking shelves, and operating cash registers. Technicians refer any questions regarding prescriptions, drug information, or health matters to a pharmacist.

**PHYSICIAN ASSISTANTS (PA)** provide health care services with the direction and responsible supervision of a doctor of medicine or osteopathy. Within the physician-PA relationship, PAs make clinical decisions and provide a broad range of diagnostic, therapeutic, preventive, and health maintenance services. The clinical role of PAs includes primary and specialty care in medical and surgical practice settings. The PA role is centered on patient care and may include educational, research, and administrative activities.

**REGISTERED NURSES (RNS)** provide care, advice, and education to patients, families, and members of the community. RNs are part of a collaborative team of health care specialists. They consult and coordinate with team members to assess, plan, implement, and evaluate patient care plans.

## NUTRITION

**DIABETES COUNSELORS AND DIABETES EDUCATORS** are most often registered nurses or registered dietitians with bachelor's degrees who have additionally completed a certification course in diabetes counseling. They educate diabetics on proper nutrition and medication management.

**DIETITIANS** promote and maintain health, prevent or treat illness, and aid rehabilitation through nutrition, education, and diet. Certified dietitians (also called certified nutritionists) may manage a

food service, plan menus for people with health problems, and give instruction on proper diet.

**DIETETIC TECHNICIANS AND DIETETIC ASSISTANTS** assist dietitians in food administration and nutrition care services.

## RADIOLOGY

**MEDICAL PHYSICIST** is a person who applies the principles of physics to direct, contain, and control radiation used for medical purposes. Some of the responsibilities of medical physicists are: protecting patients and others from unsafe and unnecessary exposure to radiation; obtaining high quality images; and delivering the proper dose of radiation to the specified area. Some of the functions of a medical physicist are: calculating patient dosage; analyzing and interpreting measurements associated with inspecting, testing, and calibrating equipment; overseeing proper disposal of radioactive waste, and designing the shielding needed around radiation sources.

**MRI (RADIOLOGIC) TECHNOLOGIST** are the medical professionals who perform diagnostic imaging examinations, either in a hospital or free-standing radiology center. Radiologic technologists who perform imaging examinations are responsible for accurately positioning patients and ensuring that a quality image is produced. They work closely with radiologists, the physicians who interpret medical images to either diagnose or rule out disease or injury. Radiologic technologists may specialize in computed tomography, magnetic resonance imaging (MRI), mammography, and other types of imaging.

**NUCLEAR MEDICINE TECHNOLOGISTS**, under a physician's supervision, use a scanner to create images of a patient's body. They prepare and administer radioactive drugs to patients undergoing the scan.

**RADIATION THERAPY TECHNOLOGISTS** apply radiation to the human body under the supervision of a radiologist to treat disease, often cancer.

**ULTRASOUND TECHNOLOGISTS** use special imaging equipment that directs sound waves into a patient's body (commonly known as ultrasounds, sonograms, or echocardiograms) that assess and diagnose various medical conditions.

**X-RAY (RADIOLOGIC) TECHNOLOGISTS** perform diagnostic imaging exams in hospitals or radiology centers. They position patients and ensure quality images are produced for radiologists to interpret for diagnosis. Technologists may specialize in areas like CT, MRI, mammography, and other imaging types and must be certified by the American Registry of Radiologic Technologists.

## THErapy SERVICES

**AUDIOLOGISTS** are specialists in communication disorders. Hearing and balance disorders are assessed and treated by an audiologist. Audiologists identify the type of hearing loss and select, fit, and dispense amplification systems such as hearing aids.

**OCCUPATIONAL THERAPISTS AND OCCUPATIONAL THERAPY ASSISTANTS** are licensed professionals who help people of all ages develop or regain skills for independent living. OTs work in various settings, including hospitals, nursing homes, schools, and private practice, and may specialize in rehabilitation or acute care.

**PHYSICAL THERAPISTS AND PHYSICAL THERAPY ASSISTANTS** work with people who have been physically disabled by illness, accident, or congenital anomaly. They treat a wide variety of conditions, including musculoskeletal and orthopedic conditions, neurological conditions, balance and coordination disorders, gait disorders, and sports and athletic injuries. Upon a physician's referral, therapists evaluate the extent of disability and plan a treatment program. Physical therapy assistants perform routine treatment procedures as directed by the therapist, assist with more complex procedures, and may perform some administrative tasks. They work under the direction of a physical therapist.

**RECREATIONAL THERAPISTS** plan, direct, and coordinate recreational programs for individuals with a disability or illness. They use a variety of methods such as music, dance, art, and exercise. In long-term and residential care facilities, recreational therapists use leisure activities—especially structured group programs—to improve and maintain their clients' general health and well-being. They assess clients using information

from observations, medical records, standardized assessments, the medical staff, the clients' families, and the clients themselves, and then develop therapeutic interventions.

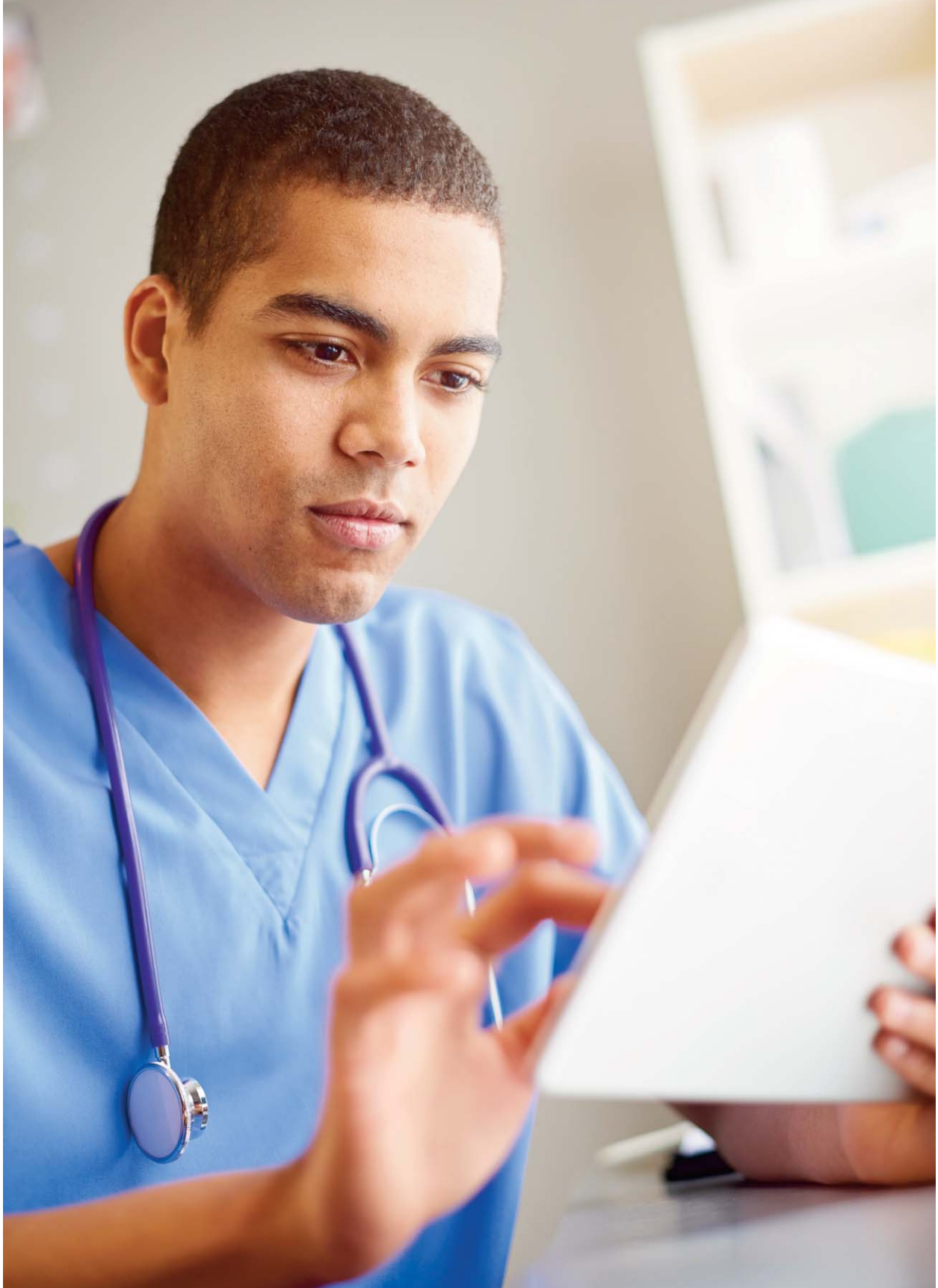
**RESPIRATORY THERAPISTS**, on physicians' orders, treat patients with heart-lung problems such as asthma, COPD, or heart failure. They administer oxygen, various types of gases, or aerosol drugs. They may do diagnostic testing related to respiratory functions or offer rehabilitation for patients with chronic lung disease or cardiac problems.

**RESPIRATORY THERAPY TECHNICIANS**, under the supervision of a respiratory therapist, perform tasks and responsibilities within the framework of the practice of respiratory therapy. Tasks include the performance of cardiopulmonary evaluation, respiratory therapy, treatment techniques, and education of the patient, family, and public.

**SPEECH-LANGUAGE PATHOLOGISTS** are specialists in communication disorders. Speech-language pathologists assess and treat speech and language development disorders and swallowing difficulties.



|  | High School<br>or GED | Specialty<br>Training | Certification | Associates<br>degree | Bachelor's<br>degree | Master's<br>degree | Doctoral<br>Program | NYS<br>License |
|--|-----------------------|-----------------------|---------------|----------------------|----------------------|--------------------|---------------------|----------------|
| Administrative and Information Services                    |                       |                       |               |                      |                      |                    |                     |                |
| Patient Access Representative                              | X                     |                       |               | preferred            |                      |                    |                     |                |
| Applications Analysts                                      |                       |                       |               |                      | X                    |                    |                     |                |
| Clinical Informaticists                                    |                       |                       | preferred     |                      | X                    | preferred          |                     |                |
| Computer Support/<br>Help Desk Specialists                 | X<br>plus exp.        |                       | X             |                      |                      |                    |                     |                |
| Health Information<br>Management Access<br>Representatives |                       |                       | preferred     |                      | X                    |                    |                     |                |
| Medical Coders   |                       | X                     | X             | X                    | preferred            |                    |                     |                |
| Unit Secretaries   | X                     |                       |               |                      |                      |                    |                     |                |
| Behavioral Health Services                                 |                       |                       |               |                      |                      |                    |                     |                |
| Licensed Behavior Analysts                                 |                       |                       |               |                      |                      | X                  |                     | X              |
| Certified Behavioral Analyst Assistants                    |                       |                       | X             |                      | X                    |                    |                     |                |
| Behavioral Health Technicians                              | X                     |                       |               | preferred            |                      |                    |                     |                |
| Behavioral Health Therapy Aides                            | X                     |                       |               |                      |                      |                    |                     |                |
| *Mental Health Counselors                                  |                       |                       |               |                      |                      | X                  |                     | X              |
| *Psychologists   |                       |                       |               |                      |                      |                    | X                   | X              |
| Rehabilitation Counselors                                  |                       |                       |               |                      |                      | X                  |                     | X              |
| *Social Workers  |                       |                       |               |                      |                      | X                  |                     | X              |
| Facilities Management                                      |                       |                       |               |                      |                      |                    |                     |                |
| Maintenance Mechanics                                      | X                     | X                     | some          | preferred            |                      |                    |                     |                |
| Security Officers  | X                     | X                     |               |                      |                      |                    |                     | X              |
| Stationary/Watch Engineers                                 | X                     | X                     | X             |                      |                      |                    |                     | some           |
| Laboratory and Technical Services                          |                       |                       |               |                      |                      |                    |                     |                |
| Biomedical Engineers                                       |                       |                       |               |                      | X                    | if<br>specialized  |                     | some           |
| Biomedical Technicians                                     |                       |                       | some          | X                    | preferred            |                    |                     |                |
| Cardiovascular Technologists                               |                       | X                     | X             | X                    |                      |                    |                     |                |
| Invasive Cardio Technician                                 | X                     | X                     | X             |                      |                      |                    |                     |                |
| Central Sterile Technicians                                | X                     |                       | X             |                      |                      |                    |                     |                |
| *Clinical Laboratory Technologists                         |                       |                       | X             |                      | X                    |                    |                     | X              |
| *Clinical Laboratory Technicians                           |                       |                       | X             | X                    |                      |                    |                     | X              |
| Cytotechnologists  |                       |                       | X             |                      | X                    |                    |                     | X              |
| Dialysis Technicians                                       | X                     |                       | X             |                      |                      |                    |                     |                |
| Electroencephalographic Technologists                      |                       |                       | X             |                      | X                    |                    |                     |                |
| Electroencephalographic Technicians                        |                       | X                     | X             | X                    |                      |                    |                     |                |
| EKG Technicians  | X                     | X                     | preferred     |                      |                      |                    |                     |                |
| Histologic Technicians                                     |                       |                       | X             | X                    |                      |                    |                     | X              |
| Perfusionists  |                       |                       | X             |                      | X                    |                    |                     | X              |
| Phlebotomist/Phlebotomy Technicians                        | X                     | X                     | preferred     |                      |                      |                    |                     |                |



|   | High School<br>or GED | Specialty<br>Training | Certification | Associates<br>degree | Bachelor's<br>degree | Master's<br>degree | Doctoral<br>Program | NYS<br>License |
|---|-----------------------|-----------------------|---------------|----------------------|----------------------|--------------------|---------------------|----------------|
| Polysomnographic Technologists                |                       | X                     | X             | preferred            |                      |                    |                     |                |
| Surgical Technologists                        |                       | X                     | X             | X                    |                      |                    |                     |                |
| Telemetry Technicians                         | X                     | X                     | preferred     |                      |                      |                    |                     |                |
| Nursing and Patient Care                      |                       |                       |               |                      |                      |                    |                     |                |
| Certified Nurse Anesthetist                   |                       |                       | X             |                      | BSN                  | X                  |                     | X              |
| Clinical Nurse Specialist                     |                       |                       | X             |                      | BSN                  | X                  |                     | X              |
| Dental Hygienists                             |                       | X                     |               | X                    |                      |                    |                     | X              |
| Dental Assistants                             | X                     | X                     | X             |                      |                      |                    |                     |                |
| *Emergency Medical Technicians and Paramedics | X                     | X                     | X             |                      |                      |                    |                     |                |
| Home Health Aides                             | X                     | X                     |               |                      |                      |                    |                     |                |
| *Licensed Practical Nurse                     | X                     | X                     |               |                      |                      |                    |                     | X              |
| Medical Assistants/PCT/PCA                    | X                     | X                     | preferred     | preferred            |                      |                    |                     |                |
| *Nurse's Aide                                 | X                     | X                     | X             |                      |                      |                    |                     |                |
| Nurse Midwife                                 |                       |                       | X             |                      | BSN                  | X                  |                     | X              |
| *Nurse Practitioners                          |                       |                       | X             |                      | BSN                  | X                  |                     | X              |
| Pharmacists                                   |                       |                       |               |                      |                      |                    | X                   | X              |
| Pharmacy Technicians                          | X                     | X                     | X             |                      |                      |                    |                     | X              |
| Physician Assistants                          |                       |                       | X             |                      |                      | X                  |                     | X              |
| *Registered Nurses                            |                       |                       |               |                      | X                    |                    |                     | X              |
| Nutrition                                     |                       |                       |               |                      |                      |                    |                     |                |
| Diabetes Counselors and Diabetes Educators    |                       |                       | X             |                      | X                    |                    |                     | X              |
| Dieticians                                    |                       |                       | X             |                      |                      | X                  |                     | X              |
| Dietetic Technicians and Dietetic Assistants  |                       | X                     | X             | X                    |                      |                    |                     |                |
| Radiology                                     |                       |                       |               |                      |                      |                    |                     |                |
| Medical Physicist                             |                       |                       | preferred     |                      |                      | X                  |                     | X              |
| *MRI Technologists                            |                       |                       | X             | X                    |                      |                    |                     | X              |
| Nuclear Medicine Technologists                |                       |                       | X             | X                    |                      |                    |                     | X              |
| Radiation Therapy Technologists               |                       | X                     | X             | X                    |                      |                    |                     | X              |
| Ultrasound Technologists                      |                       | X                     | X             | X                    |                      |                    |                     |                |
| *X-Ray Technologists                          |                       | X                     | X             | X                    |                      |                    |                     | X              |
| Therapy Services                              |                       |                       |               |                      |                      |                    |                     |                |
| Audiologists                                  |                       |                       |               |                      |                      | X                  | preferred           | X              |
| Occupational Therapists                       |                       |                       | X             |                      |                      | X                  |                     | X              |
| Occupational Therapy Assistants               |                       |                       | X             | X                    |                      |                    |                     | X              |
| *Physical Therapists                          |                       |                       |               |                      |                      |                    | X                   | X              |
| Physical Therapy Assistants                   |                       | X                     |               | X                    |                      |                    |                     |                |
| Recreational Therapists                       |                       |                       | X             |                      | X                    |                    |                     |                |
| Respiratory Therapists                        |                       |                       | X             | X                    | preferred            |                    |                     | X              |
| Respiratory Therapy Technicians               |                       | X                     | X             | X                    |                      |                    |                     | X              |
| Speech-Language Pathologists                  |                       |                       | X             |                      |                      | X                  |                     | X              |

# HEALTH EQUITY AND HEALTH CAREERS

Chances are that if you are thinking about a career in healthcare, part of the reason is because you have a desire to make a difference in people's lives. The diversity of our region and the broad spectrum of jobs in healthcare assures that this is exactly what you will do.

Everyone deserves access to quality care regardless of obstacles that might stand in the way. Whether a person faces economic uncertainties, disabilities of any kind, transportation issues, or presents with unique health needs due to their gender, religion, or culture, healthcare must be available and just for all. The healthcare industry refers to this as "health equity." With a career in healthcare, you will have the opportunity to embrace and advance health equity.

**Everyone should have the opportunity to live a healthy life.**  
Here's an example of how we get there.

Not everyone has what they need to be healthy.

| lacks fresh produce   | lacks safe walking trails | lacks nearby doctors           |
|---|---------------------------|--------------------------------|
| Equity ensures everyone has what they need based on their unique situations.            | access to produce truck   | access to parks and recreation |
| Equity ensures everyone has an <b>equal</b> opportunity to pursue their highest health. | telehealth options        |                                |

equal opportunity for health

We can create a world where everyone has the opportunity to be as healthy as possible. Learn more at [www.cdc.gov/health-equity](http://www.cdc.gov/health-equity).

**While equitable healthcare is every health provider's responsibility, there are many roles in healthcare that lean heavily into reducing health disparities.**

**Some of these jobs include:**

**Case Managers**  
**Community Health Workers**  
**Patient Care Navigators**  
**Health Educators**  
**Data Collectors and Analysts**

The healthcare industry truly offers many career choices. Job training and education is equally diverse, ranging from jobs that require short-term study to obtain certifications to ones that require advanced college degrees and ones requiring various levels of specialized training and college education. Think about your interests and skills and how you might be able to use them in new and exciting ways to bring quality healthcare to everyone.

## Social Determinants of Health



Healthy People 2030, U.S. Department of Health and Human Services, Office of Disease Prevention and Health Promotion.  
Retrieved March 18, 2025, from <https://odphp.health.gov/healthypeople/objectives-and-data/social-determinants-health>

## SAMPLE OF MEDIAN SALARIES

\*U.S., 2023

| OCCUPATION/PROFESSION   | MEDIAN SALARY* | OCCUPATION/PROFESSION                     | MEDIAN SALARY* |
|---|----------------|---|----------------|
| Audiologists  | \$87,740       | *Nursing Assistants                       | \$38,200       |
| Psychiatric Aides   | \$39,160       | Occupational Therapists                   | \$96,370       |
| Bioengineers and Biomedical Engineers                               | \$100,730      | Occupational Therapy Assistants           | \$67,010       |
| Biomedical Technicians  | \$45,340       | Pharmacists                               | \$136,030      |
| Cardiovascular Technologists and Technicians                        | \$66,170       | Pharmacy Technicians                      | \$40,300       |
| *Clinical Laboratory Technologists and Technicians                  | \$60,780       | Phlebotomists                             | \$41,810       |
| Dental Assistants   | \$46,540       | Physical Therapists                       | \$99,710       |
| Dental Hygienists   | \$87,530       | Physical Therapy Assistants               | \$64,080       |
| Diagnostic Medical Sonographers                                     | \$84,470       | Physician Assistants                      | \$130,020      |
| Dietetic Technicians  | \$36,520       | *Psychologists                            | \$92,740       |
| Dietitians and Nutritionists  | \$69,680       | *Radiologic Technologists and Technicians | \$73,410       |
| *Emergency Medical Technicians                                      | \$38,930       | Recreational Therapists                   | \$57,120       |
| Health Information Technologists                                    | \$62,990       | *Registered Nurses                        | \$86,070       |
| Health Education Specialists  | \$62,860       | Rehabilitation Counselors                 | \$44,040       |
| Home Health Aides   | \$33,530       | *Respiratory Therapists                   | \$77,960       |
| *Licensed Practical Nurses and Licensed Vocational Nurses           | \$59,730       | Security Guards                           | \$37,070       |
| *Substance Abuse, Behavioral Disorder, and Mental Health Counselors | \$53,710       | *Social Workers                           | \$58,380       |
| Magnet Resonance Imaging (MRI) Technologists                        | \$83,740       | Speech-Language Pathologists              | \$89,290       |
| Industrial Machinery Mechanics and Machinery Maintenance Workers    | \$61,420       | Stationary Engineers and Boiler Operators | \$67,640       |
| Medical Assistants  | \$42,000       | Surgical Technologists                    | \$60,610       |
| Medical Records Specialists   | \$48,780       |   |                |
| Nuclear Medicine Technologists                                      | \$92,500       |   |                |
| *Nurse Practitioners  | \$126,260      |   |                |

Source: U.S. Bureau of Labor Statistics' Occupational Employment Statistics Survey, 2023.

Note: Salaries are the national medians for all people employed in those professions, not for entry-level hires. Data provided are for reference only and do not represent the salary scales of any local employers.

## HEALTH OCCUPATION EDUCATION PROGRAMS NASSAU/SUFFOLK COUNTIES

| Profession  | Educational Institution                              | Degree Program  |
|---|--|---|
| Applications Analyst  | Adelphi University                                   | B.S., M.S. Computer Science   |
|   | Farmingdale State College                            | B.S. Computer Science   |
|   | Hofstra University                                   | B.B.S. in Information Systems or Business Analytics, B.A. in Computer Science, B.S. in Computer Science, Computer Engineering, or Cyber Security, dual B.S./M.S., MBA |
|   | LIU Post   | B.S. in Computer Science, M.S. in Data Analytics  |
|   | Molloy University                                    | B.A., B.S. in Computer Information Systems, Computer Science, or Computer Studies   |
|   | Nassau Community College                             | A.S. Computer Science   |
|   | St. Joseph's College                                 | B.S. Computer Science   |
|   | Stony Brook University                               | B.S., M.S., Ph.D. in Computer Science   |
|   | Suffolk Community College                            | A.A.S. in Computer Science or Information Technology or Computer Information Systems  |
| Applied Behavior Analysts                                       | LIU Post   | M.A. in Behavior Analysis, Advanced Certificate in Applied Behavior Analysis  |
|   | St. Joseph College                                   | Advanced Certificate in Applied Behavior Analysis   |
|   | Hofstra University                                   | Advanced Certificate, M.S. in Applied Behavior Analysis   |
| Audiologist   | Adelphi University                                   | Au.D.   |
|   | Hofstra University                                   | Au.D.   |
|   | Molloy University                                    | B.S., M.S. in Speech-Language Pathology   |
|   | St. Joseph's College                                 | B.A.  |
|   | LIU Post   | B.S. in Speech-Language Pathology and Audiology, M.S., M.A. in Speech-Language Pathology  |
| Behavioral Health Technician/<br>Behavioral Health Therapy Aide | BOCES (Eastern Suffolk, Nassau, and Western Suffolk) | Certificate as a nurse assistant  |
| Biomedical Engineers  | Hofstra University                                   | B.E. in Engineering, B.S. in Bioengineering   |
|   | LIU Post   | B.S., M.S. in Biomedical Science  |
|   | New York Institute of Technology                     | B.S. in Biomedical Science  |
|   | Stony Brook University                               | B.M.E., M.S., Ph.D. in Biomedical Engineering   |
| Cardiac Monitor Technician/Telemetry Technician                 | Western Suffolk BOCES                                | Certificate   |
| Cardiovascular Technologist                                     | Molloy University                                    | A.A.S. in Cardiovascular Technology   |
|   | Hofstra University                                   | Certificate in Perfusion Clinical Competence, M.S. in Cardiovascular Sciences and Perfusion Medicine  |
| Central Sterile Supply Technicians                              | Western Suffolk BOCES                                | Certificate, Central Service Technician   |

| Profession   | Educational Institution                                  | Degree Program   |
|--|--|--|
| Clinical Informaticist Advanced Certificate, also see Registered Nurse | Adelphi University                                       | M.S. in Healthcare Informatics   |
|  | Farmingdale State College                                | See Registered Nurse   |
|  | Molloy University  | See Registered Nurse   |
|  | New York Institute of Technology                         | See Registered Nurse   |
|  | St. Joseph's College                                     | See Registered Nurse   |
|  | Stony Brook University                                   | M.S. in Applied Health Informatics, also Registered Nurse  |
| Clinical Information Systems Specialist                                | Hofstra University                                       | B.B.A. in Information Systems, M.S. in Health Informatics  |
|  | LIU Post   | B.S.   |
|  | St. Joseph's College                                     | M.B.A. in Health Information Systems, Advanced Certificate in Management of Health Information Systems |
|  | Stony Brook University                                   | B.S. in Information Systems  |
| *Clinical Laboratory Technologists                                     | Farmingdale State College                                | B.S. in Medical Laboratory Science   |
|  | LIU Post   | B.S. in Biomedical Sciences: Clinical Laboratory Science, M.S. in Clinical Laboratory Science          |
|  | St. Joseph's College                                     | B.S. in Medical Technology   |
|  | Stony Brook University                                   | B.S. in Clinical Laboratory Science  |
| *Clinical Laboratory Technicians                                       | Nassau Community College                                 | A.A.S. in Medical Laboratory Technician  |
| Computer Support/Help Desk Specialists                                 |  | High School Diploma  |
| Dental Assistant   | Eastern Suffolk BOCES                                    | Certificate  |
|  | Nassau BOCES   | Certificate  |
|  | Nassau Community College                                 | Certificate  |
|  | Stony Brook University                                   | Certificate  |
| Dental Hygienist   | Farmingdale State College                                | A.A.S., B.S. in Dental Hygiene   |
| Diabetes Counselor/Educator  | Adelphi University                                       | See Registered Nurse and/or Dietitian Listings   |
|  | Farmingdale State College                                |  |
|  | LIU Post   |  |
|  | Molloy University  |  |
|  | New York Institute of Technology                         |  |
|  | St. Joseph's College                                     |  |
|  | Stony Brook University                                   |  |
| Diagnostic Medical Sonographer/ Ultrasound Technologist                | Western Suffolk BOCES                                    | Certificate  |
|  | Northwell Health School of Diagnostic Medical Sonography | Certificate in Abdominal Sonography Extended and Obstetrics & Gynecology Sonography (Track A)          |
| Dietitians and Clinical Nutritionist                                   | Adelphi University                                       | M.S. in Nutrition  |
|  | Farmingdale State College                                | B.S. in Nutrition Science  |
|  | Hofstra University                                       | B.S. in Health Science   |
|  | LIU Post   | B.S., M.S. in Nutrition, Dietetic internship program for B.S. students                                 |
|  | Nassau Community College                                 | A.S. in Food and Nutrition   |
|  | New York Institute of Technology                         | M.S. in Clinical Nutrition   |
|  | Stony Brook University                                   | Advanced Certificate, M.S. in Nutrition  |

| Profession   | Educational Institution                       | Degree Program  |
|--|---|---|
| Dietetic Technician                                | Nassau Community College                      | Certificate in Dietary Management   |
|  | Suffolk County Community College              | A.A.S. in Dietetic Technician   |
| Echocardiography Technician (Cardiac Sonographers) | Western Suffolk BOCES                         | Certificate.  |
|  | Northwell Health School of Diagnostic Medical | Adult Cardiac Sonography & Vascular Sonography (Track B)  |
| EKG Technician                                     | Eastern Suffolk BOCES                         | Certificate   |
|  | Nassau Community College                      | Certificate   |
|  | Western Suffolk BOCES                         | Certificate   |
|  | Suffolk County Community College              | Certificate   |
| *Emergency Medical Technician/<br>Paramedic        | Long Island Educational Opportunity Center    | Certificate   |
|  | Nassau Community College                      | Certificate   |
|  | Stony Brook University                        | Certificate, A.A.S.   |
|  | Suffolk County Community College              | A.A.S.  |
| Health Information Manager                         | Adelphi University                            | M.S., Advanced Certificate in Healthcare Informatics  |
|  | LIU Post                                      | B.S. Health Information Management, one-year post-BA program for career changes, PhD in Health Informatics  |
|  | Molloy University                             | M.B.A. in Health Care Management, A.A.S. to B.A. in Health Service Leadership   |
|  | Nassau Community College                      | A.A.S., Certificate in Health Information Technology  |
|  | St. Joseph's College                          | M.S. in Health Care Management, M.B.A. in Health Care Management-Health Information Systems, Advanced Certificate in Management of Health Information Systems |
|  | Stony Brook University                        | M.S. in Applied Health Informatics  |
|  | Suffolk County Community College              | A.A.S. in Health Information Technology/Medical Records   |
| Home Health Aide                                   | Eastern Suffolk BOCES                         | Certificate, Home Health Care Aide  |
| Invasive Cardiology Technologist                   | Molloy University                             | A.A.S. in Cardiovascular Technology   |
| *Licensed Mental Health Counselor                  | LIU Post                                      | M.S.  |
|  | Molloy University                             | M.S. in Clinical Mental Health Counseling   |
|  | SUNY Old Westbury                             | M.S.  |
|  | Hofstra University                            | M.S.  |
|  | New York Institute of Technology              | Advanced Certificate or M.S. in Mental Health Counseling  |
| *Licensed Practical Nurse                          | Eastern Suffolk BOCES                         | Practical Nursing Certificate   |
|  | Suffolk County Community College              | Practical Nursing Certificate   |
|  | Western Suffolk BOCES                         | Practical Nursing Certificate   |
| Maintenance Mechanic                               |   | High School Diploma   |
| Medical Assistant                                  | Eastern Suffolk BOCES                         | Certificate   |
|  | Nassau BOCES                                  | Certificate   |
|  | Molloy University                             | Certificate   |
|  | Western Suffolk BOCES                         | Certificate   |
|  | Suffolk County Community College              | Certificate   |

| Profession   | Educational Institution   | Degree Program   |
|--|---|--|
| Medical Records Technician/Coder   | Eastern Suffolk BOCES   | Certificate  |
|  | Molloy University   | Certificate in Certified Coding Specialist Preparation or Health Care Billing-Physician and Hospital Billing   |
|  | Nassau BOCES  | Certificate  |
|  | Nassau Community College  | Certificate, A.A.S. in Health Information Technology   |
|  | Suffolk County Community College                                | Certificate, A.A.S. in Health Information Technology/Medical Records   |
|  | Western Suffolk BOCES   | Certificate  |
| Nuclear Medicine Technologist  | Molloy University   | A.A.S., B.S. in Nuclear Medicine Technology  |
| *Nurse Aide/CNA  | Long Island Educational Opportunity Center                      | Certificate  |
|  | Nassau BOCES  | Certificate  |
|  | Stony Brook University  | Certificate  |
| *Adult Gerontology Nurse Practitioner (AGNP), Pediatric Nurse Practitioner - Primary Care (PNP), Psychiatric Mental Health Nurse Practitioner (PMHNP), Family Nurse Practitioner (FNP), Adult Gerontology Acute Care Nurse Practitioner (AGACNP) | Adelphi University  | M.S., D.N.P., Adult Gerontology Primary Care Nurse Practitioner Program; M.S., Advanced Certificate, Psychiatric-Mental Health Nurse Practitioner (PMH-NP) Program |
|  | LIU Post  | M.S.   |
|  | Molloy University   | M.S.   |
|  | St. Joseph's College  | M.S. in Adult Gerontology Primary Care Nurse Practitioner  |
|  | Stony Brook University  | M.S., D.N.P. Curriculums: Adult-Gerontology Primary Care, Pediatric Primary Care, Neonatal, Women's Health, Psychiatric, Nurse Midwifery, Family Health)           |
| Occupational Therapist   | Hofstra University  | B.S.   |
|  | New York Institute of Technology                                | Combined B.S./M.S., M.S.   |
|  | Stony Brook University  | M.S.   |
|  | Touro University School of Health Sciences Central Islip Campus | B.S. in Health Sciences/M.S. in Occupational Therapy dual degree program, O.T.D.   |
| Occupational Therapy Assistant   | Suffolk County Community College                                | A.A.S.   |
| Perfusionist   | Hofstra University  | M.S. Cardiovascular Sciences and Perfusion Medicine  |
|  | LIU Post  | M.S.   |
| Pharmacist   | Hofstra University  | B.S. Chemistry   |
|  | LIU Post  | B.A. Chemistry   |
|  | Stony Brook University  | B.S. in Pharmacological Sciences, M.S., Ph.D. in Molecular and Cellular Pharmacology   |
| Pharmacy Technician  | Western Suffolk BOCES   | Certificate  |
|  | Long Island Educational Opportunity Center                      | Certificate  |
|  | Nassau Community College  | Certificate  |
|  | Molloy University   | Certificate  |
|  | Suffolk County Community College                                | Certificate in Pharmacy Technician or Pharmacy Technician Assistant  |

| Profession                         | Educational Institution  | Degree Program  |
|------------------------------------|--|---|
| Phlebotomist/Phlebotomy Technician | Eastern Suffolk BOCES  | Certificate   |
|                                    | Nassau BOCES   | Certificate   |
|                                    | Stony Brook University   | Certificate   |
|                                    | Western Suffolk BOCES  | Certificate   |
| Physical Therapist                 | Adelphi University   | B.S. Physical Therapy   |
|                                    | Hofstra University   | B.S. Health Science   |
|                                    | New York Institute of Technology   | Entry-level D.P.T., Combined B.S./D.P.T.  |
|                                    | Stony Brook University   | D.P.T., transition program for B.S. physical therapists to achieve DPT  |
|                                    | Touro University School of Health Sciences Central Islip Campus            | D.P.T.  |
| Physical Therapist Assistant       | Eastern Suffolk BOCES  | Certificate   |
|                                    | Long Island Educational Opportunity Center                                 | Certificate   |
|                                    | Nassau BOCES   | Certificate   |
|                                    | Nassau Community College   | A.A.S.  |
|                                    | Suffolk County Community College   | A.A.S.  |
|                                    | Western Suffolk BOCES  | Certificate   |
| Physician's Assistant              | Hofstra University   | B.S. in Health Science, B.S./M.S. Dual Program  |
|                                    | New York Institute of Technology   | M.S. in Physician Assistant Studies or Combined B.S. in Life Sciences and M.S. in Physician Assistant Studies |
|                                    | Stony Brook University   | M.S. Physician Assistant, transitional program for B.A. physician assistants to achieve M.S.                  |
|                                    | Touro University School of Health Sciences Central Islip and NUMC Campuses | PA program provides B.S. in Health Sciences and M.S. in Physician Assistant Studies                           |
| Polysomnography Technologist       | Stony Brook University   | Certificate, B.S. in Respiratory Care with Polysomnography Specialty  |
| *Psychologist                      | Adelphi University   | B.A. in Psychology, B.A./M.A. in Psychology, Ph.D. Clinical Psychology  |
|                                    | Empire State University  | B.A. in Human Development   |
|                                    | Farmingdale State College  | B.S. in Applied Psychology  |
|                                    | Hofstra University   | B.A., M.A., Ph.D., Psy.D. in Psychology   |
|                                    | LIU Post   | B.S. in Psychology, M.S. in Mental Health Counseling  |
|                                    | Molloy University  | B.S. in Psychology  |
|                                    | New York Institute of Technology   | B.S. in Psychology  |
|                                    | St. Joseph's College   | B.A., B.S. in Psychology, B.A./M.B.A. Dual Degree in Industrial-Organizational Psychology                     |
|                                    | Stony Brook University   | B.A., B.S., M.S., Ph.D. in Psychology   |

| Profession   | Educational Institution                                      | Degree Program  |
|--|--|---|
| Public Health Educator                                 | Farmingdale State College                                    | B.S. in Health Promotion and Wellness   |
|  | Adelphi University   | MPH   |
|  | SUNY Old Westbury  | B.S in Public Health  |
|  | Stony Brook University                                       | MPH   |
|  | Hofstra University   | B.S. in Community Health, MPH   |
|  | New York Institute of Technology                             | MPH   |
|  | Empire State University                                      | B.S. in Public Health   |
| Radiation Therapy Technologist/<br>Radiation Therapist | Nassau Community College                                     | A.A.S.  |
|  | Stony Brook University                                       | B.S. in Health Science with Radiation Therapy Concentration   |
| *Radiologic Technologist                               | LIU Post   | B.S.  |
|  | Nassau Community College                                     | A.A.S.  |
|  | Stony Brook University                                       | Certificate   |
|  | Western Suffolk BOCES  | Certificate   |
|  | Catholic Health Mercy Hospital School of Radiography         | Certificate   |
|  | Hunter Business School Levittown Campus                      | Certificate   |
|  | Stony Brook University                                       | B.S. in Health Science with Radiologic Technology Concentration   |
|  | Mount Sinai South Nassau                                     | Certificate   |
|  | Northwell Health Peconic Bay School of Radiologic Technology | Certificate   |
| Recreational Therapist                                 | St. Joseph's College   | B.S., eligible for NCTRC certification exam   |
| *Registered Nurse                                      | Adelphi University   | B.S., R.N. to B.S., M.S. in Nursing Administration, Ph.D. in Nursing  |
|  | Farmingdale State College                                    | Transition program for R.N. to B.S., B.S.   |
|  | LIU Post   | B.S. in Nursing for RNs only  |
|  | Molloy University  | B.S., B.S.N., M.S., Post-M.S. Certificate, Ph.D., DNP; L.P.N. to B.S.N., A.A.S. to B.S.N. and career change transition programs |
|  | Nassau Community College                                     | A.S.  |
|  | New York Institute of Technology                             | B.S.  |
|  | St. Joseph's College   | B.S., M.S., transition programs for career changes, M.S. for Clinical Nurse Specialist  |
|  | Stony Brook University                                       | B.S., M.S., transition programs for career changes, M.S. for Clinical Nurse Specialist  |
|  | Suffolk County Community College                             | A.S., L.P.N. to R.N. transition program   |
| Rehabilitation Counselor                               | Adelphi University   | M.A. Mental Health Counseling   |
|  | Hofstra University   | M.S.Ed Rehab Counseling   |
|  | St. Joseph's University, LI Campus                           | Certificate in Alcoholism and Addictions Counseling   |
| *Respiratory Therapist                                 | Stony Brook University                                       | B.S. in Respiratory Therapy   |
| Respiratory Therapy Technician                         | Molloy University  | A.S., B.S. in Respiratory Care  |
|  | Nassau Community College                                     | A.A.S Respiratory Care  |

| Profession                  | Educational Institution                    | Degree Program   |
|-----------------------------|--|--|
| Security Officer            | Eastern Suffolk BOCES                      | Certificate  |
|                             | Long Island Educational Opportunity Center | Certificate  |
| *Social Worker              | Adelphi University                         | B.S.W., M.S.W. & Ph.D.   |
|                             | Empire State University                    | B.S. Community and Human Services  |
|                             | LIU Post                                   | B.S., M.S.W.   |
|                             | Molloy University                          | B.S.W., B.A./M.S.W. (joint program with Fordham)   |
|                             | New York Institute of Technology           | B.S.   |
|                             | Stony Brook University                     | B.S.W., M.S.W., M.S.W./M.P.H. Dual Degree, M.S.W./J.D. Dual Degree (partnership with Touro Law School, Ph.D.)                          |
| Speech-Language Pathologist | Adelphi University                         | B.S. in Communication Disorders, M.S. with Speech-Language Pathology Concentration, AuD, Ph.D. in Speech Language Sciences & Disorders |
|                             | Hofstra University                         | B.A./M.A. Speech-Language Pathology  |
|                             | LIU Post                                   | B.S./M.A.  |
|                             | Molloy University                          | B.A., M.S. Speech-Language Pathology   |
|                             | St. Joseph's College                       | B.A. in Speech   |
|                             | Stony Brook University                     | M.S. Speech Language Pathology   |
| Stationary/Watch Engineer   | Eastern Suffolk BOCES                      | HVRAC/EPA Certificate  |
|                             | Farmingdale State College                  | B.S. in Industrial Technology- Facility Management Technology  |
|                             | Nassau BOCES                               | HVAC Certificate   |
|                             | Suffolk County Community College           | Certificate, A.A.S. in HVAC/R, A.S. in Engineering Science   |
| Surgical Technologist       | Nassau Community College                   | A.A.S.   |
|                             | Western Suffolk BOCES                      | Certificate  |
|                             | Suffolk County Community College           | A.A.S. in Surgical Technology  |
| Unit Clerk                  |  | High School Diploma  |



## NASSAU-SUFFOLK HOSPITAL COUNCIL MEMBER INSTITUTIONS

### **GLEN COVE HOSPITAL**

101 Saint Andrews Lane, Glen Cove, NY 11542  
(516) 674-7300  
[glencove.northwell.edu](http://glencove.northwell.edu)



### **MOUNT SINAI SOUTH NASSAU HOSPITAL**

One Healthy Way, Oceanside, NY 11572  
(516) 632-3000  
[southnassau.org](http://southnassau.org)



### **GOOD SAMARITAN UNIVERSITY HOSPITAL**

1000 Montauk Highway, West Islip, NY 11975  
(631) 376-4444  
[catholichealthli.org/good-samaritan-university-hospital](http://catholichealthli.org/good-samaritan-university-hospital)



### **NASSAU UNIVERSITY MEDICAL CENTER**

2201 Hempstead Turnpike, East Meadow, NY 11554  
(516) 572-0123  
[numc.edu](http://numc.edu) | [nuhealth.net](http://nuhealth.net)



### **HUNTINGTON HOSPITAL**

270 Park Avenue, Huntington, NY 11743  
(631) 351-2000  
[huntington.northwell.edu](http://huntington.northwell.edu)



### **NORTH SHORE UNIVERSITY HOSPITAL**

300 Community Drive, Manhasset, NY 11030  
(516) 562-0100  
[nsuh.northwell.edu](http://nsuh.northwell.edu)



### **LONG ISLAND JEWISH VALLEY STREAM HOSPITAL**

900 Franklin Avenue, Valley Stream, NY 11571  
(516) 256-6000  
[valleystream.northwell.edu](http://valleystream.northwell.edu)



### **NYU LANGONE HOSPITAL-LONG ISLAND**

259 First Street, Mineola, NY 11501  
(516) 663-0333  
[nyulangone.org/locations/nyu-langone-hospital-long-island](http://nyulangone.org/locations/nyu-langone-hospital-long-island)



### **MATHER HOSPITAL**

75 North Country Road, Port Jefferson, NY 11777  
(631) 473-1320  
[www.matherhospital.org](http://www.matherhospital.org)



### **NYU LANGONE HOSPITAL-SUFFOLK**

101 Hospital Road, Patchogue, NY 11772  
(631) 654-7100  
[nyulangone.org/locations/nyu-langone-hospital-suffolk](http://nyulangone.org/locations/nyu-langone-hospital-suffolk)



### **MERCY HOSPITAL**

1000 North Village Avenue, Rockville Centre, NY 11571  
(516) 705-2525  
[catholichealthli.org/mercy-hospital](http://catholichealthli.org/mercy-hospital)



### **PECONIC BAY MEDICAL CENTER**

1300 Roanoke Avenue, Riverhead, NY 11901  
(631) 548-6000  
[pbmchealth.org](http://pbmchealth.org)



**PLAINVIEW HOSPITAL**

888 Old Country Road, Plainview, NY 11803  
(516) 719-3000  
[plainview.northwell.edu](http://plainview.northwell.edu)

**STONY BROOK EASTERN LONG ISLAND HOSPITAL**

201 Manor Place, Greenport, NY 11944  
(631) 477-1000  
[elih.stonybrookmedicine.edu](http://elih.stonybrookmedicine.edu)

**SOUTH SHORE UNIVERSITY HOSPITAL**

301 East Main Street, Bay Shore, NY 11706  
(631) 968-3000  
[ssuh.northwell.edu](http://ssuh.northwell.edu)

**STONY BROOK SOUTHAMPTON HOSPITAL**

240 Meeting House Lane, Stony Brook, NY 11968  
(631) 726-8200  
[southampton.stonybrookmedicine.edu](http://southampton.stonybrookmedicine.edu)

**ST. CATHERINE OF SIENA HOSPITAL**

50 Route 25A, Smithtown, NY 11787  
(631) 870-3444  
[catholicealthli.org/st-catherine-siena-hospital](http://catholicealthli.org/st-catherine-siena-hospital)

**STONY BROOK UNIVERSITY HOSPITAL**

101 Nicolls Road and Health Sciences Drive, Stony Brook, NY 11794  
(631) 444-4000  
[stonybrookmedicine.edu](http://stonybrookmedicine.edu)

**ST. CHARLES HOSPITAL**

200 Belle Terre Road, Port Jefferson, NY 11777  
(631) 474-6000  
[catholicealthli.org/st-charles-hospital](http://catholicealthli.org/st-charles-hospital)

**SYOSSET HOSPITAL**

221 Jericho Turnpike, Syosset, NY 11791  
(516) 496-6400  
[syosset.northwell.edu](http://syosset.northwell.edu)

**ST. FRANCIS HOSPITAL & HEART CENTER**

100 Port Washington Blvd., Roslyn, NY 11576  
(888) HeartNY  
[catholicealthli.org/st-francis-hospital](http://catholicealthli.org/st-francis-hospital)

**ST. JOSEPH HOSPITAL**

4295 Hempstead Turnpike, Bethpage, NY 11714  
(516) 520-2500  
[catholicealthli.org/st-joseph-hospital](http://catholicealthli.org/st-joseph-hospital)







## Nassau-Suffolk Hospital Council

### ABOUT THE NASSAU-SUFFOLK HOSPITAL COUNCIL

The Nassau-Suffolk Hospital Council (NSHC) is the advocacy organization representing the interests of all Long Island hospitals to lawmakers, regulatory agencies, and the media. Its activities also include educating hospital staff, working with allied health and community organizations, and representing hospitals in the business community. The association is committed to ensuring that affordable, quality care is accessible to all, and that a well-prepared workforce is ready to meet the health care needs of Long Island's patients.